

Working Instructions

- mechanical -



Xperia TX

LT29i

CONTENTS

1	Exterior Views.....	4
1.1	LT29i	4
2	Tools	5
3	Disassembly.....	6
3.1	Cover Battery Assy	6
3.2	Battery.....	6
3.3	Frame Rear Assy	7
3.4	Key Flex FPC	9
3.5	Camera.....	10
3.6	RCV Flex FPC Assy.....	11
3.7	Main PBA & Cover Front Assy	12
4	Replacement	15
4.1	Label NFC	15
4.2	Cover Battery Assy	16
4.3	Label Core Unit.....	17
4.4	Water Indicator	18
4.5	Frame Rear Assy	19
4.6	Antenna NFC	20
4.7	Cushion.....	21
4.8	Audio Jack & Adhesive Audio Jack.....	22
4.9	Vibrator	25
4.10	Loudspeaker & Adhesive Speaker.....	26
4.11	Cap RF	28
4.12	Main Antenna Assy	30
4.13	Sub Antenna Assy	32
4.14	Key Camera	34
4.15	Key On/Off	36
4.16	Key Volume	38
4.17	Camera.....	40
4.18	RCV Flex FPC	42
4.19	Ear Speaker & Adhesive Earspeaker	49
4.20	Cushion Audio Jack.....	52
4.21	Cushion Audio Jack 2.....	53
4.22	RF Cable	55
4.23	Cushion Key Flex	59
4.24	Key Flex FPC	60
4.25	Sub Board Assy	61
4.26	Cushion PBA Main	63
4.27	Sheet PBA Main.....	64

4.28	Cover Front Assy	66
4.29	Board Swap - Replacement	67
4.30	Board Swap – Change Label	67
4.31	Board Swap – Customize of Software	67
5	Reassembly.....	68
5.1	Cover Front Assy & Main PBA	68
5.2	RCV Flex FPC Assy.....	70
5.3	Camera.....	71
5.4	Key Flex FPC	72
5.5	Frame Rear Assy.....	74
5.6	Battery.....	76
5.7	Cover Battery Assy	76
6	Revision History	78

**For general information about mechanical repair related issues, refer to
1220-1333: Generic Repair Manual - mechanical**

1 Exterior Views

1.1 LT29i



2 Tools

SPECIAL TOOLS

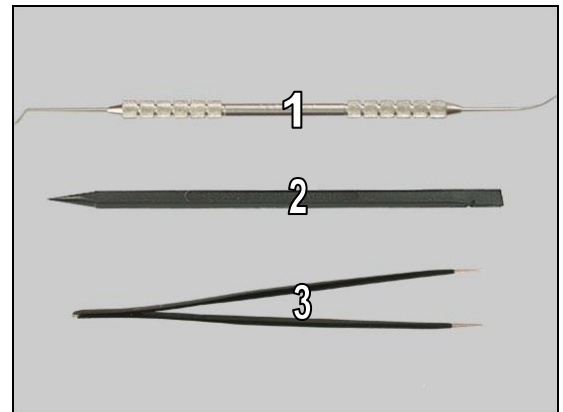
1. Torque Screwdriver
2. Front Opening Tool
3. Bits (T5)
4. Bits (JCIS No 0)
5. Flex Film Assembly Tool
6. Guitar Pick



For part no's on the tools above, refer to the 'Tools Catalogue/Matrix'!

STANDARD TOOLS

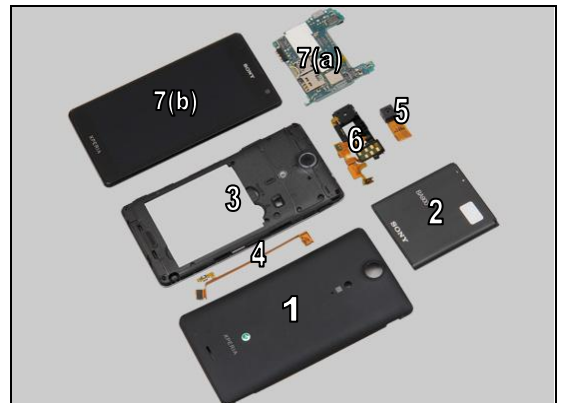
1. Dentist Hook
2. Nylon Pointer
3. Tweezers



3 Disassembly

The disassembly is done in the following order:

1. Cover Battery Assy
2. Battery
3. Frame Rear Assy
4. Key Flex FPC
5. Camera
6. RCV Flex FPC Assy
7. Main PBA (a) & Cover Front Assy (b)



3.1 Cover Battery Assy

Gently pull upwards to unsnap the hooks of the Cover Battery Assy.



Remove the Cover Battery Assy.



3.2 Battery

Gently pull upwards to release the Battery with a finger.



Disassembly

Remove it.



3.3 Frame Rear Assy

Remove the four Screw Other Len:4.0 Diam:1.4 by using a screwdriver with Bits (T5).

Scrap! Not to be reused!



Remove the Screw 1.4X3.5 by using a screwdriver with Bits (JCIS No 0).

Scrap! Not to be reused!



Remove the three Screw M1.4X3.0 by using a screwdriver with Bits (JCIS No 0).

Scrap! Not to be reused!



Disassembly

There are twelve hooks securing the Frame Rear Assy.



Insert a Guitar Pick as shown in picture and gently slide along to release the hooks.



Do the same to release the bottom side.



Do the same to release the hooks on the opposite side.



Disassembly

Do the same on the top side.

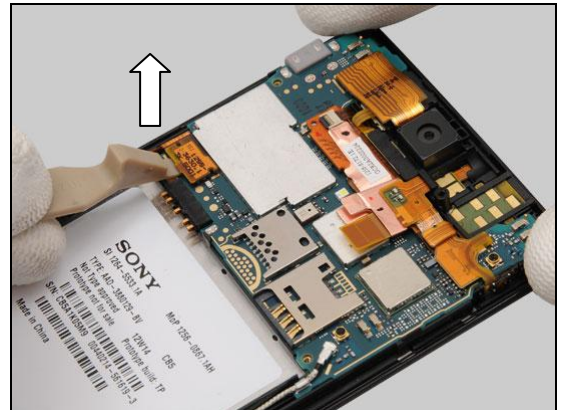


Remove the Frame Rear Assy.

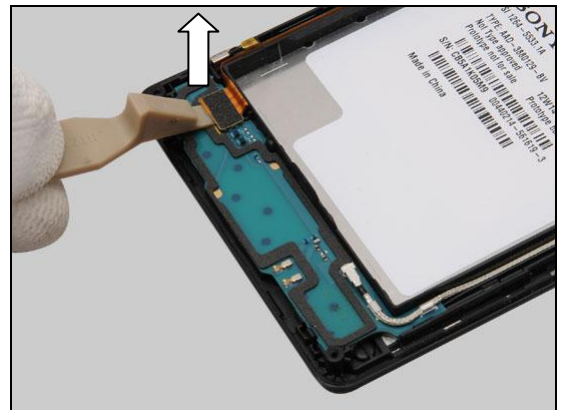


3.4 Key Flex FPC

Disconnect the BtB connector of the Key Flex FPC by using a Front Opening Tool.

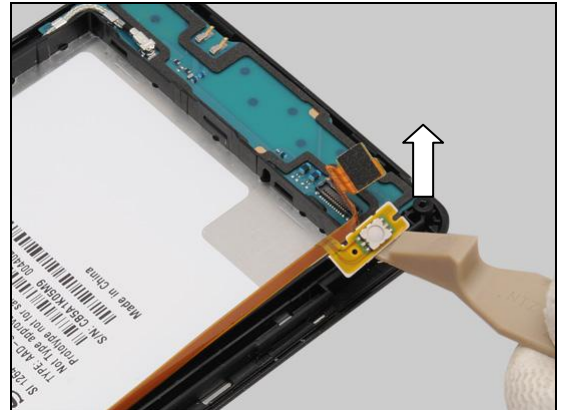


Disconnect the second BtB connector.

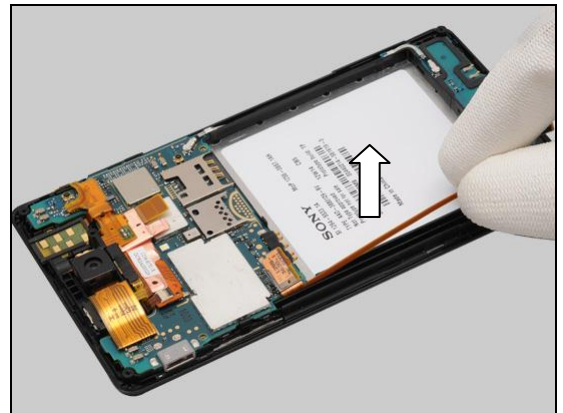


Disassembly

Gently pull upwards to release the key camera switch as shown in picture by using a Front Opening Tool.

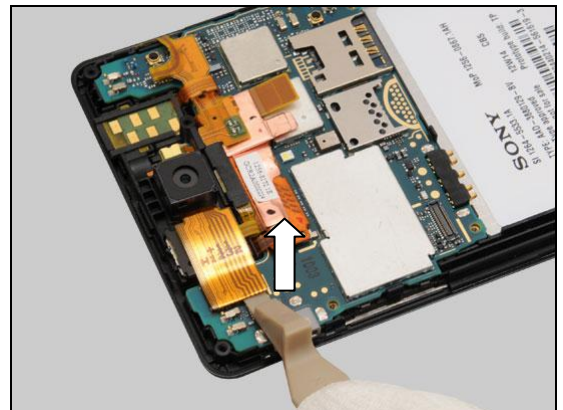


Remove the Key Flex FPC.



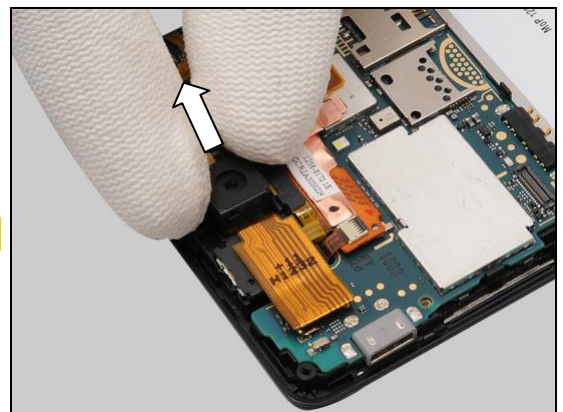
3.5 Camera

Disconnect the BtB connector of the Camera by using a Front Opening Tool.



Remove the Camera.

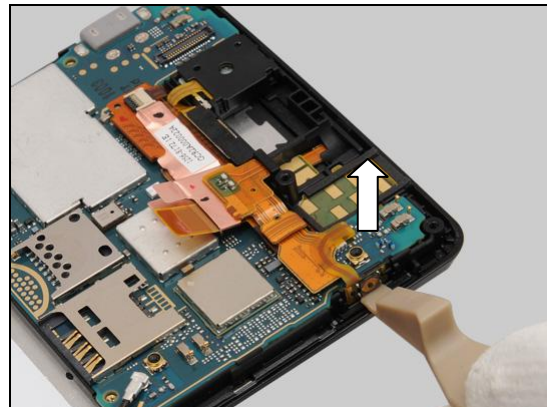
Be careful! Do not touch the camera lens!



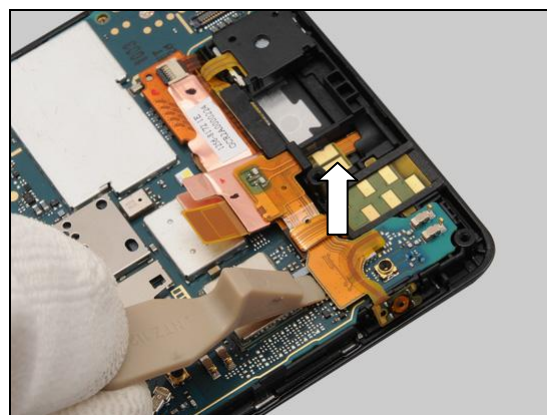
Disassembly

3.6 RCV Flex FPC Assy

Gently pull upwards to release the key on/off switch by using a Front Opening Tool as shown.

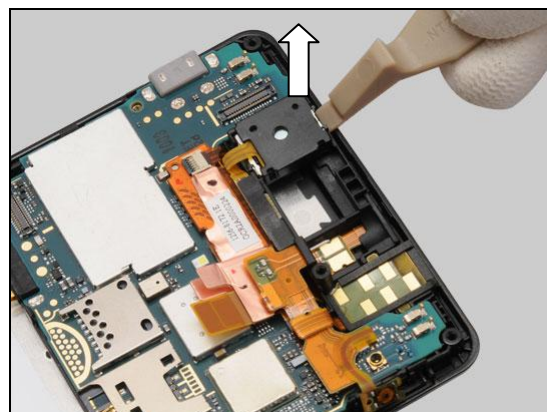


Disconnect the BtB connector.



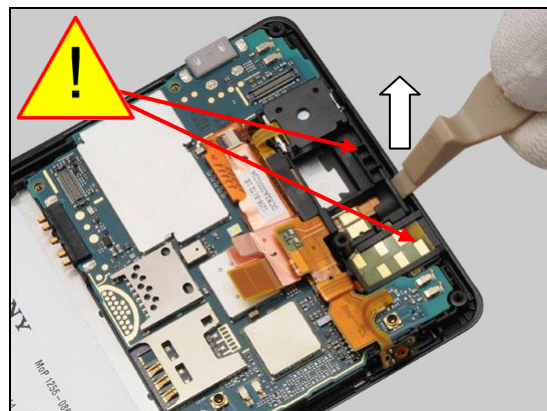
Insert a Front Opening Tool as shown and gently pull upwards to release the RCV Flex FPC Assy from this side.

Be careful! Do not damage the Cover Front Assy!



Do the same on the other side as shown in picture.

Be careful! Do not damage the earspeaker mesh and the proximity sensor window of the Cover Front Assy!

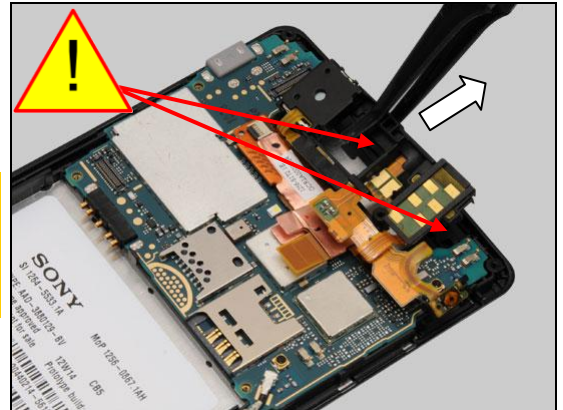


Disassembly

Remove the RCV Flex FPC Assy by using a Flex Film Assembly Tool.

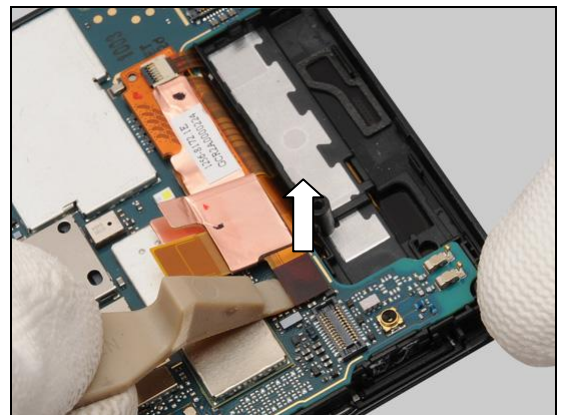
Scrap the RCV Flex FPC Assy! Only the Ear Speaker can be reused!

Be careful! Do not damage the earspeaker mesh and the proximity sensor window of the Cover Front Assy!

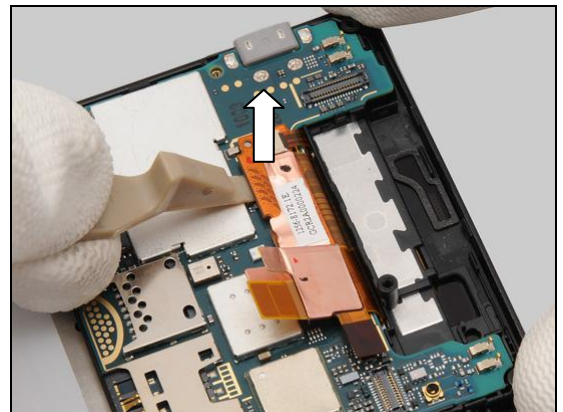


3.7 Main PBA & Cover Front Assy

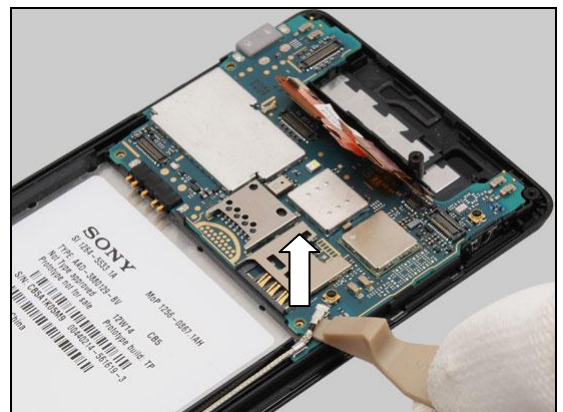
Disconnect the BtB connector by using a Front Opening Tool.



Disconnect the second BtB connector.



Disconnect this end of the RF Cable by using a Front Opening Tool.

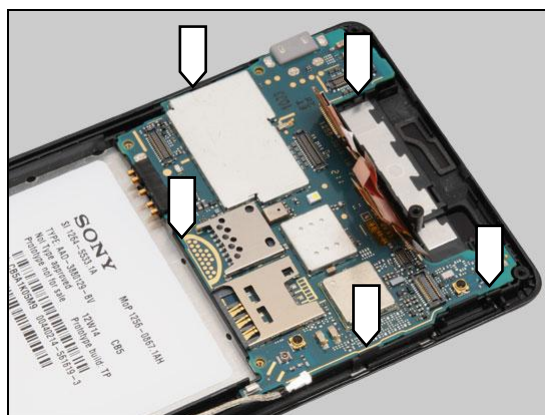


Disassembly

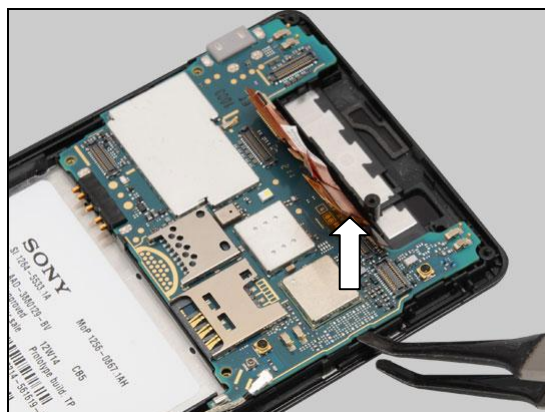
Gently pull outwards to release the RF Cable from the hook of the Main PBA.



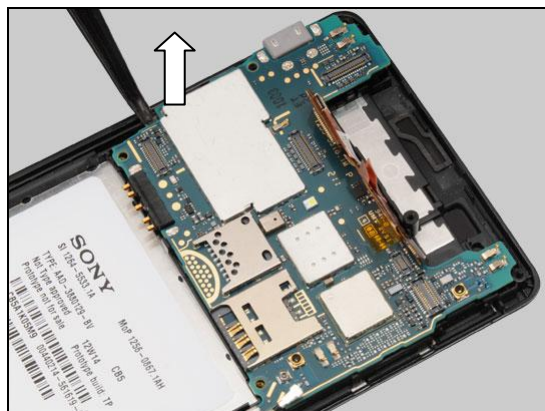
There are five hooks securing the Main PBA.



Insert a Flex Film Assembly Tool as shown in picture and gently pull upwards to release the hooks.



Do the same to release the Main PBA.



Disassembly

Remove the Main PBA.



4 Replacement

4.1 Label NFC

Carry out the Removal as described below!

Prepare a new Label NFC.

Carry out the Installation as described below.

REMOVAL

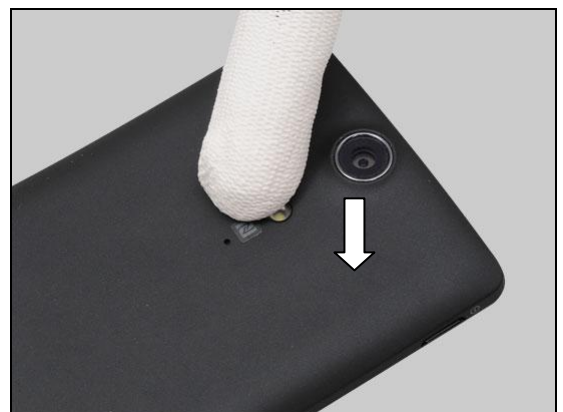
Carefully peel off the Label NFC by using a Flex Film Assembly Tool.

Scrap! Not to be reused!

INSTALLATION

Attach a new Label NFC on its proper position as indicated by the blue rectangle.

Press to secure its position and attachment.



Replacement

4.2 Cover Battery Assy

Follow the 3.1 Disassembly instructions!

Prepare a new Cover Battery Assy.

Follow the 4.1 installation instructions!

Follow the 5.7 Reassembly instructions!



Replacement

4.3 Label Core Unit

Follow the 3.1 – 3.2 Disassembly instructions!

Carry out the Removal as described below!

Prepare a new Label Core Unit.

Carry out the Installation as described below.

Follow the 5.6 – 5.7 Reassembly instructions!

REMOVAL

Read the old Mobile Phone Label and write the information into the 'Label Print Solution' program before removal.

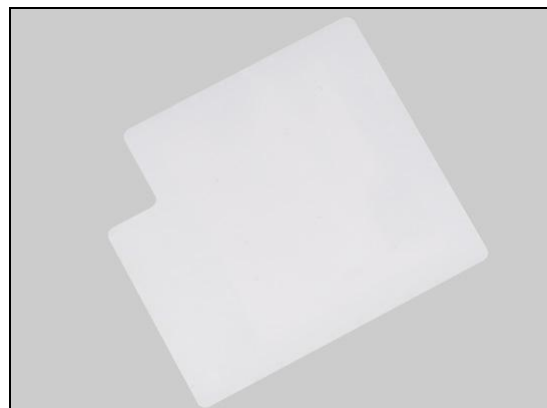
Carefully peel off the Label Core Unit by using a Flex Film Assembly Tool.

Scrap! Not to be reused!

INSTALLATION

Check that the label format is properly loaded in the Zebra printer and write a new Label using the "Label Print Solution" software.

Attach a new Label Core Unit on its proper position and press along to secure its attachment.



Replacement

4.4 Water Indicator

Follow the 3.1 – 3.2 Disassembly instructions!
 Carry out the Removal as described below.
 Prepare a new Water indicator.
 Carry out the Installation as described below.
Follow the 5.6 – 5.7 Reassembly instructions!

REMOVAL

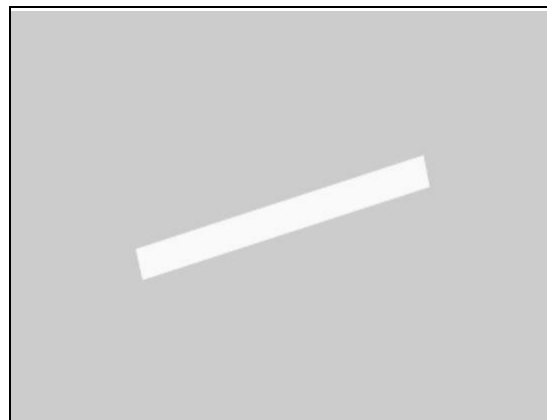
Detach to remove the Water indicator.

Scrap! Not to be reused!

INSTALLATION

Place a new Water Indicator on the correct position as indicated by the guide line.

Press to secure its position and attachment.



Replacement

4.5 Frame Rear Assy

Follow the 3.1 – 3.3 Disassembly instructions!

Follow the 4.8, 4.9, 4.10, 4.11, 4.14, 4.15 and 4.16 Removal instructions!

Prepare a new Frame Rear Assy.

Follow the 4.6, 4.7, 4.8, 4.9, 4.10, 4.11, 4.12, 4.13, 4.14, 4.15 and 4.16 Installation instructions!

Follow the 5.5 – 5.7 Reassembly instructions!



Replacement

4.6 Antenna NFC

Follow the 3.1 – 3.3 Disassembly instructions!

Carry out the Removal as described below.

Prepare a new Antenna NFC.

Carry out the Installation as described below.

Follow the 4.7 Installation instructions!

Follow the 5.5 – 5.7 Reassembly instructions!

REMOVAL

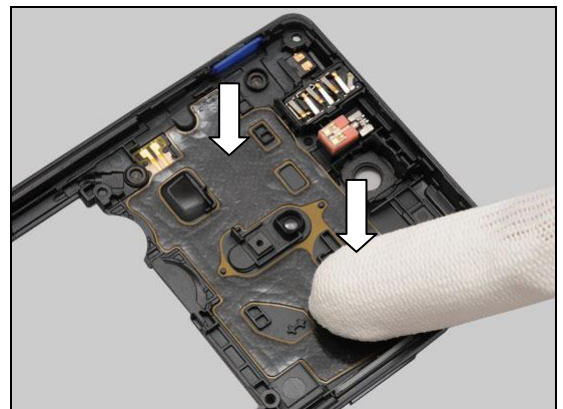
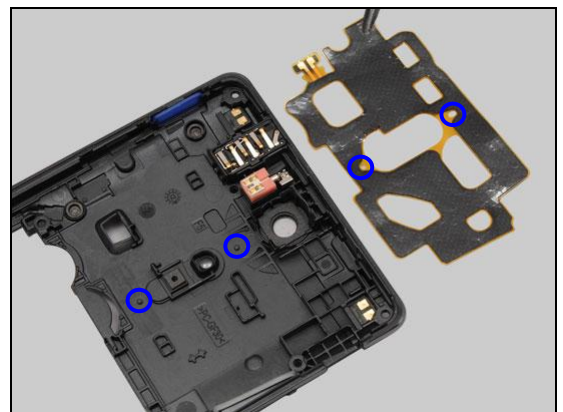
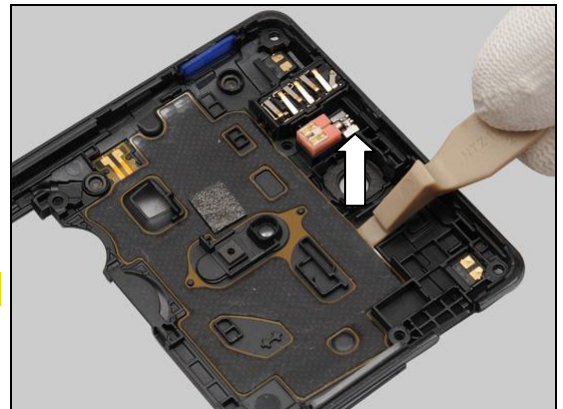
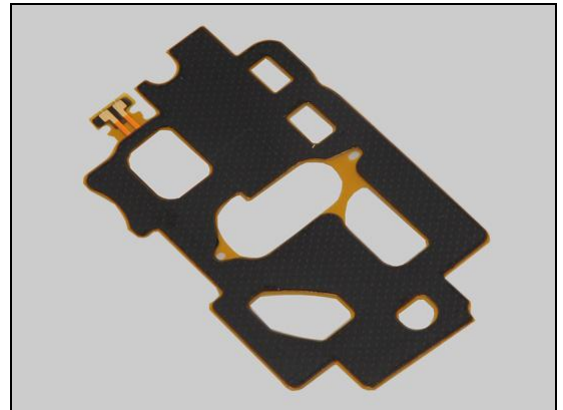
Detach to remove the Antenna NFC by using a Flex Film Assembly Tool.

Scrap! Not to be reused!

INSTALLATION

Place a new Antenna NFC on its proper position as indicated by the pegs and holes.

Press along to secure its position.



Replacement

4.7 Cushion

Follow the 3.1 – 3.3 Disassembly instructions!

Carry out the Removal as described below.

Prepare a new Cushion.

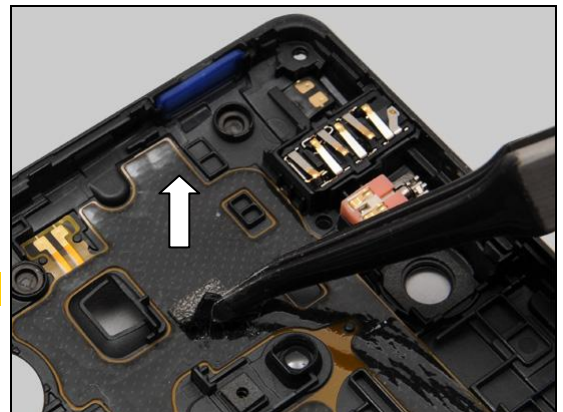
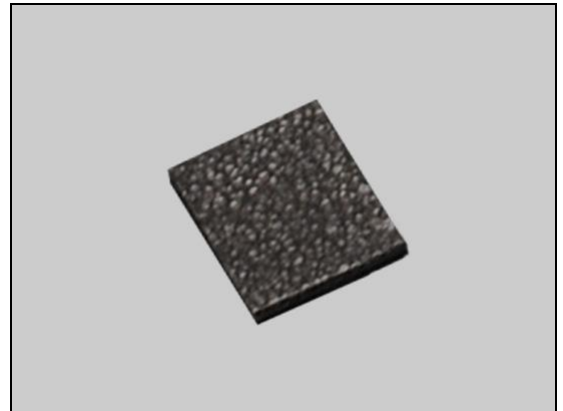
Carry out the Installation as described below.

Follow the 5.5 – 5.7 Reassembly instructions!

REMOVAL

Detach to remove the Cushion by using a Flex Film Assembly Tool.

Scrap! Not to be reused!

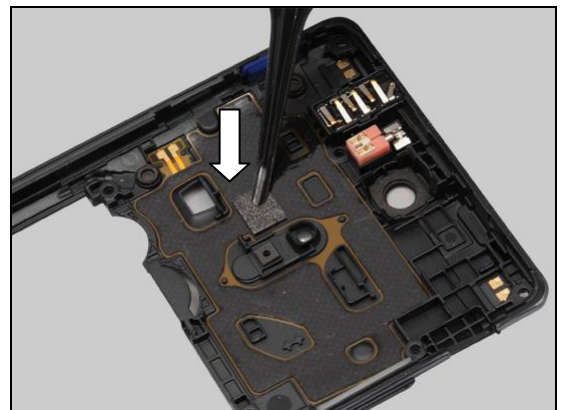


INSTALLATION

Place a new Cushion on its proper position as indicated by the guiding rectangle.



Press along to secure its position and attachment.



Replacement

4.8 Audio Jack & Adhesive Audio Jack

Follow the 3.1 – 3.3 Disassembly instructions!

Carry out the Removal as described below.

Prepare a new Audio Jack and a new Adhesive Audio Jack.

Carry out the Installation as described below.

Follow the 5.5 – 5.7 Reassembly instructions!

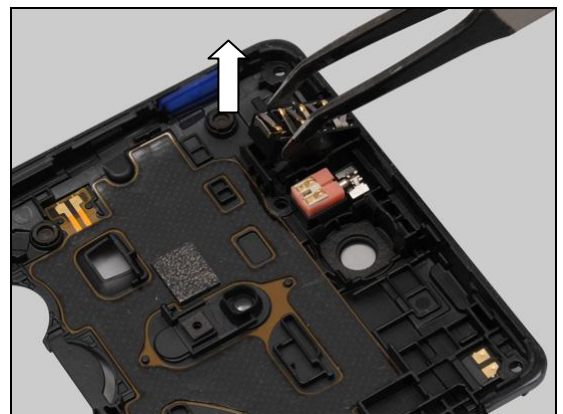
REMOVAL

Insert a Nylon Pointer into the hole of the Audio Jack and gently pull upwards to release it from the cavity.

Remove it.

Detach to remove the Adhesive Audio Jack by using a Flex Film Assembly Tool.

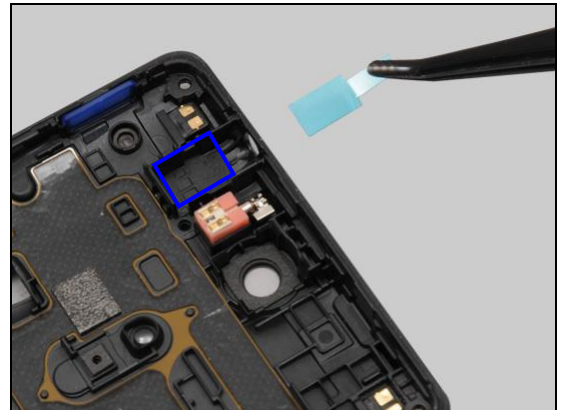
Scrap! Not to be reused!



Replacement: Audio Jack & Adhesive Audio Jack

INSTALLATION

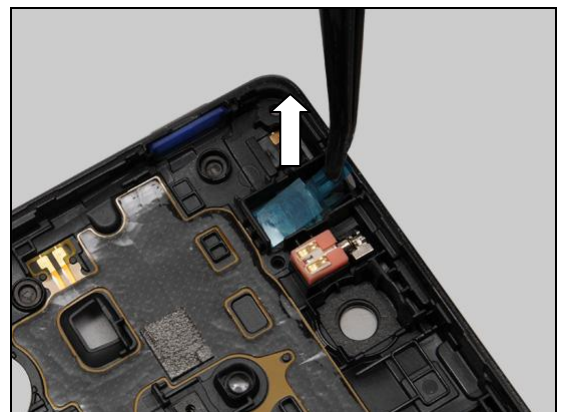
Place a new Adhesive Audio Jack in the cavity.



Press to secure its attachment and position.



Peel off the protective film.



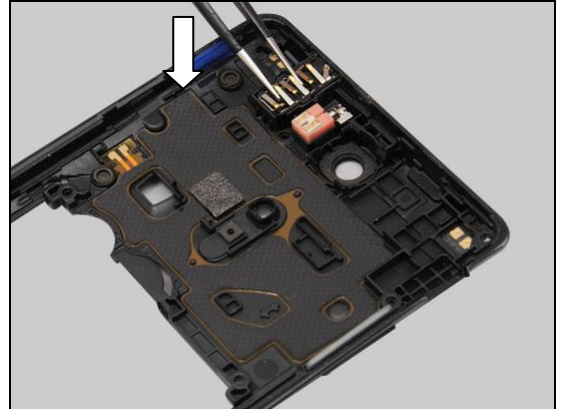
Place a new Audio Jack in the cavity.



Replacement: Audio Jack & Adhesive Audio Jack

Press to secure its attachment and position.

Be careful! Do not touch the contact pins!



Replacement

4.9 Vibrator

Follow the 3.1 – 3.3 Disassembly instructions!

Carry out the Removal as described below.

Prepare a new Vibrator.

Carry out the Installation as described below.

Follow the 5.5 – 5.7 Reassembly instructions!

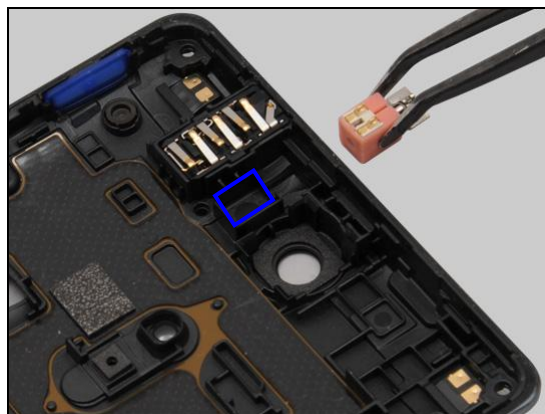
REMOVAL

Lift up to remove the Vibrator from the cavity by using a Flex Film Assembly Tool.



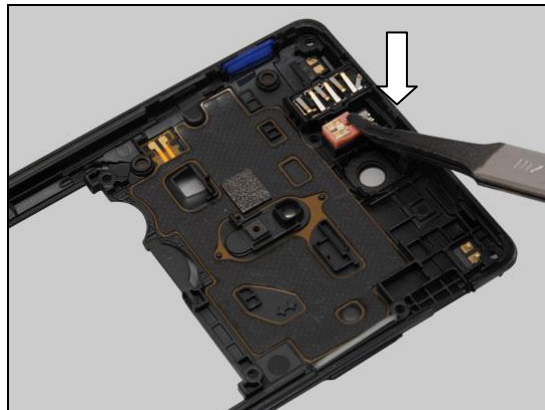
INSTALLATION

Place a new Vibrator in the cavity.



Press to secure its position.

Be careful! Do not touch the contact pins!



Replacement

4.10 Loudspeaker & Adhesive Speaker

Follow the 3.1 – 3.3 Disassembly instructions!

Carry out the Removal as described below.

Prepare a new Loudspeaker and a new Adhesive Speaker.

Carry out the Installation as described below.

Follow the 5.5 – 5.7 Reassembly instructions!

REMOVAL

Detach to remove the Loudspeaker from the cavity by using a pair of Tweezers.



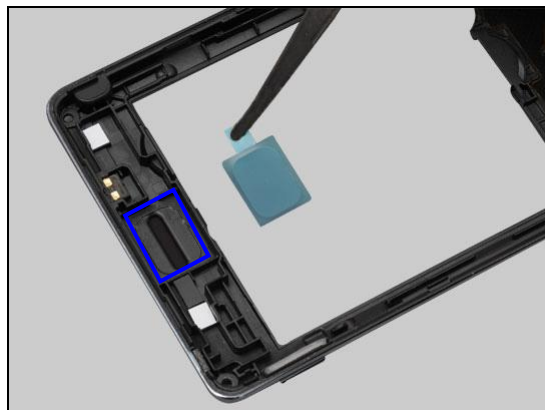
Detach to remove the Adhesive Speaker.

Scrap! Not to be reused!



INSTALLATION

Place a new Adhesive Speaker in the cavity.

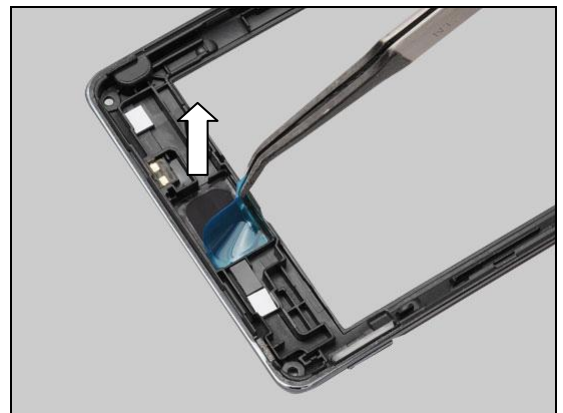


Replacement: Loudspeaker & Adhesive Speaker

Press to secure its attachment.



Peel off the protective film.



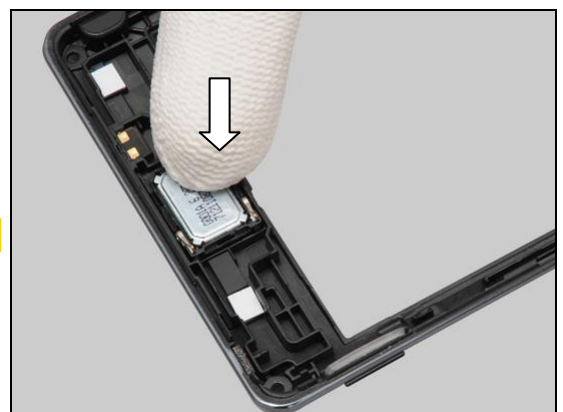
Place it in the cavity.

Note the orientation of the Loudspeaker to be installed!



Press to secure its attachment and position.

Be careful! Do not touch the contact pins!



Replacement

4.11 Cap RF

Follow the 3.1 – 3.2 Disassembly instructions!

Carry out the Removal as described below.

Prepare a new Cap RF.

Carry out the Installation as described below.

Follow the 5.6 – 5.7 Reassembly instructions!

There are two Cap RFs.

REMOVAL

Gently insert the dentist hook underneath the Cap RF and remove it.

Be careful! Do not damage the RF connector under the Cap RF!

INSTALLATION

Place a new Cap RF in the hole as indicated by the pointer.



Replacement: Cap RF

Press along to secure its position.



Do the same to the other if need!



Replacement

4.12 Main Antenna Assy

Follow the 3.1 – 3.3 Disassembly instructions!

Carry out the Removal as described below.

Prepare a new Main Antenna Assy.

Carry out the Installation as described below.

Follow the 5.5 – 5.7 Reassembly instructions!

REMOVAL

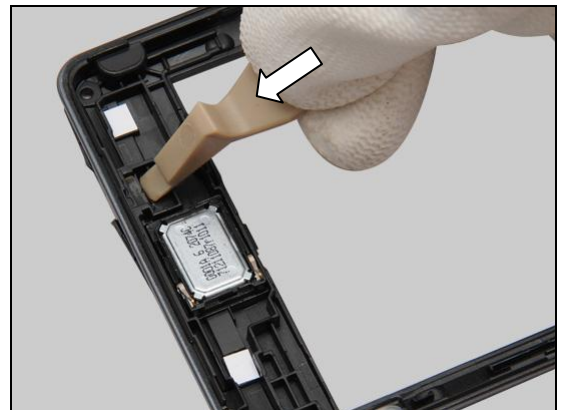
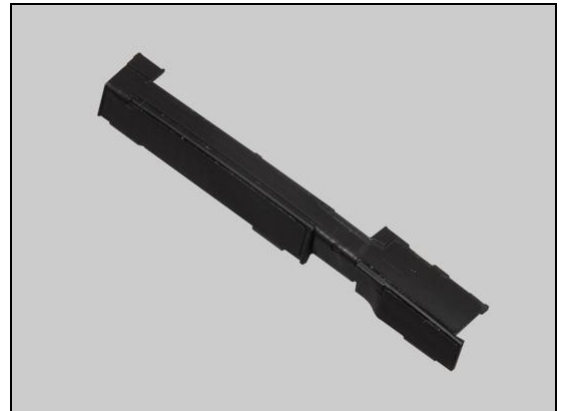
Push against the Main Antenna Assy from the back side of the Frame Rear Assy by using a Front Opening Tool as shown.

Turn the Frame Rear Assy over and lift up to remove the Main Antenna Assy.

Scrap! Not to be reused!

INSTALLATION

Place a new Main Antenna Assy on its proper position as shown.



Replacement: Main Antenna Assy

Press to secure its attachment and position.



Replacement

4.13 Sub Antenna Assy

Follow the 3.1 – 3.3 Disassembly instructions!

Carry out the Removal as described below.

Prepare a new Sub Antenna Assy.

Carry out the Installation as described below.

Follow the 5.5 – 5.7 Reassembly instructions!

REMOVAL

Push against the Sub Antenna Assy from the back side of the Frame Rear Assy by using a Front Opening Tool as shown.

Turn the Frame Rear Assy over and lift up to remove the Sub Antenna Assy.

Scrap! Not to be reused!

INSTALLATION

Place a new Sub Antenna Assy on its proper position as shown.



Replacement: Sub Antenna Assy

Press to secure its attachment and position.



Replacement

4.14 Key Camera

Follow the 3.1 – 3.3 Disassembly instructions!

Carry out the Removal as described below.

Prepare a new Key Camera.

Carry out the Installation as described below.

Follow the 5.5 – 5.7 Reassembly instructions!

REMOVAL

Push against the Key Camera from the outside of the Frame Rear Assy as shown.



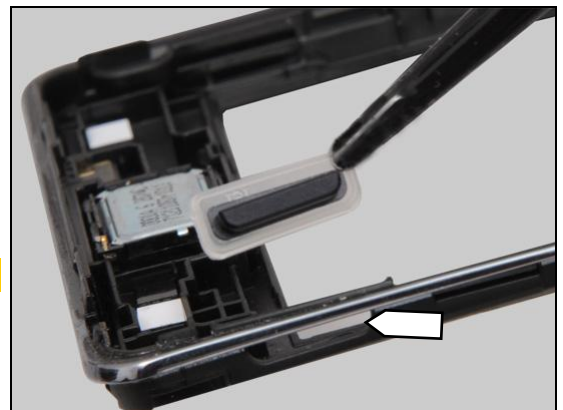
Remove the Key Camera.



INSTALLATION

Place a new Key Camera into the slot as shown.

Note the orientation of the Key Camera to be installed!

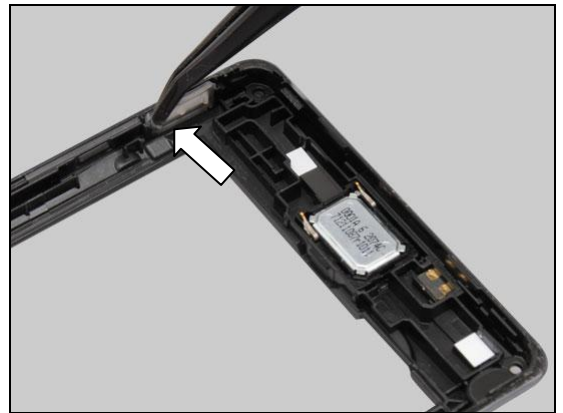


Replacement: Key Camera

Insert the rubber of the Key Camera into the hook of this side as shown.



Do the same to the other side.



Replacement

4.15 Key On/Off

Follow the 3.1 – 3.3 Disassembly instructions!

Carry out the Removal as described below.

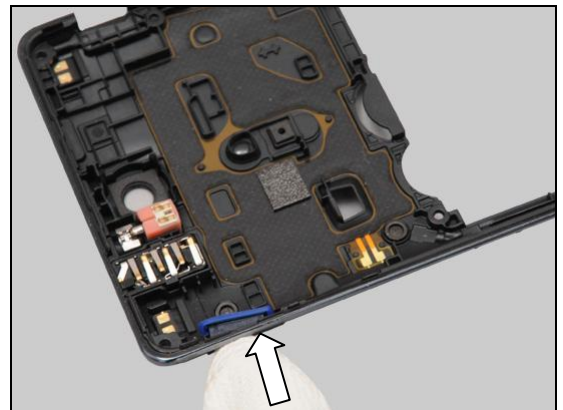
Prepare a new Key On/Off.

Carry out the Installation as described below.

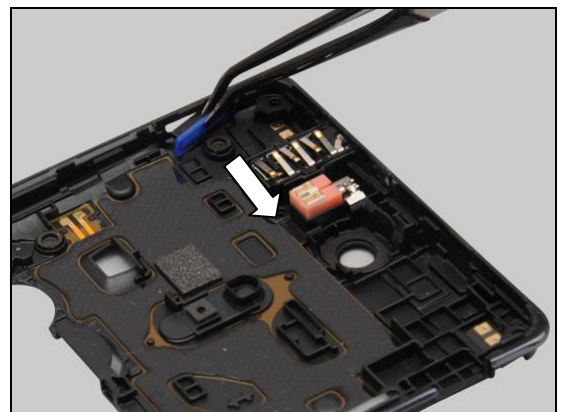
Follow the 5.5 – 5.7 Reassembly instructions!

REMOVAL

Push against the Key On/Off from the outside of the Frame Rear Assy as shown.



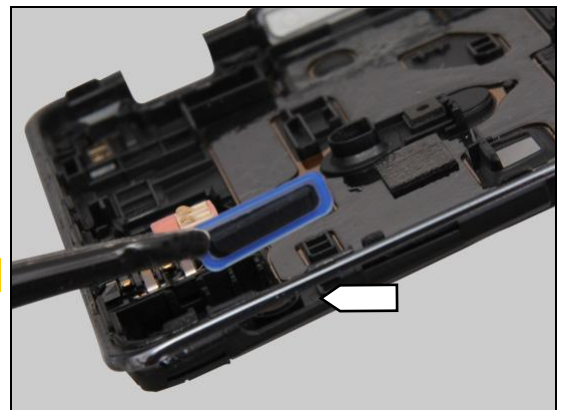
Remove the Key On/Off.



INSTALLATION

Place a new Key On/Off into the slot as shown.

Note the orientation of the Key On/Off to be installed!

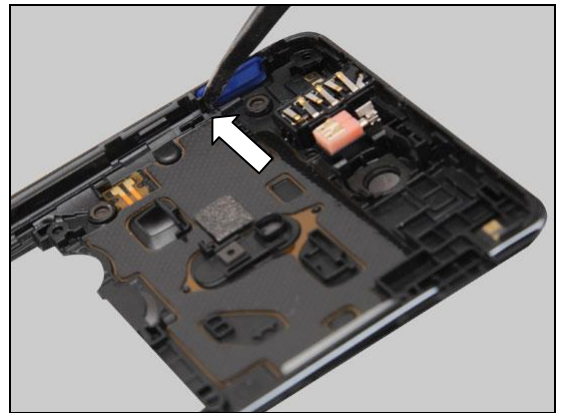


Replacement: Key On/Off

Insert the rubber of the Key On/Off into the hook of this side as shown.



Do the same to the other side.



Replacement

4.16 Key Volume

Follow the 3.1 – 3.3 Disassembly instructions!

Carry out the Removal as described below.

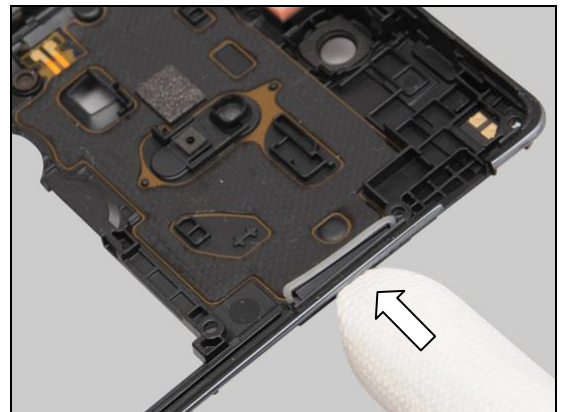
Prepare a new Key Volume.

Carry out the Installation as described below.

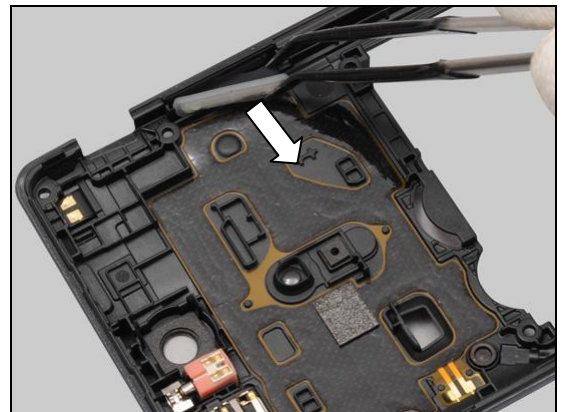
Follow the 5.5 – 5.7 Reassembly instructions!

REMOVAL

Push against the Key Volume from the outside of the Frame Rear Assy as shown.



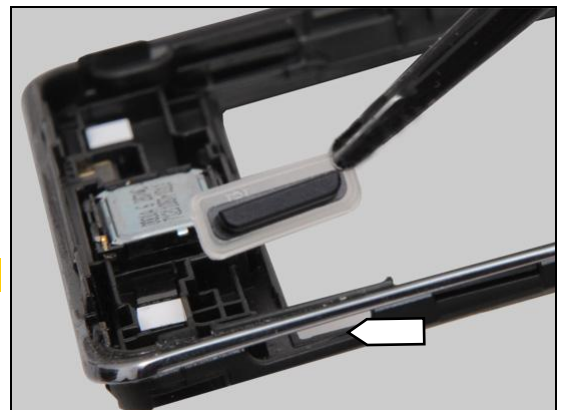
Remove the Key Volume.



INSTALLATION

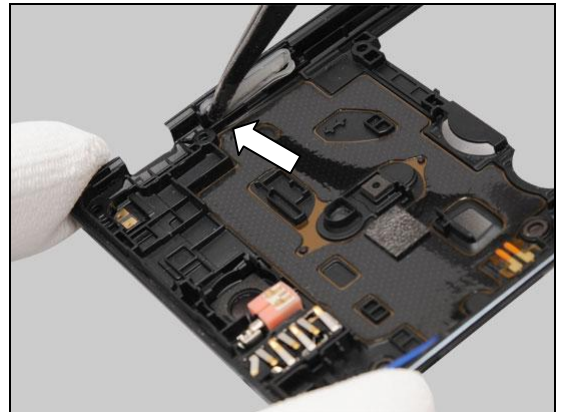
Place a new Key Volume into the slot as shown.

Note the orientation of the Key Volume to be installed!

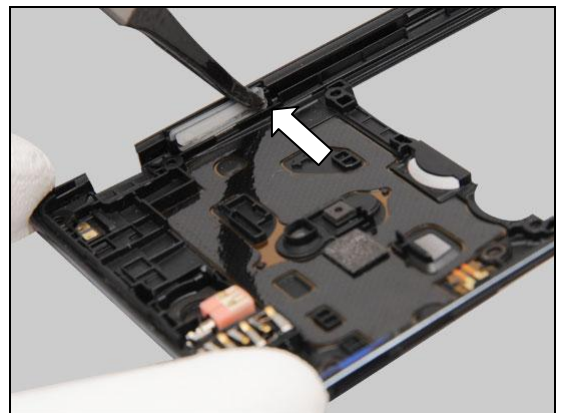


Replacement: Key Volume

Insert the rubber of the Key Volume into the hook of this side as shown.



Do the same to the other side.



Replacement

4.17 Camera

Follow the 3.1 – 3.3 Disassembly instructions!
Carry out the Removal as described below.
Prepare a new Camera.
Carry out the Installation as described below.
Follow the 5.5 – 5.7 Reassembly instructions!

REMOVAL

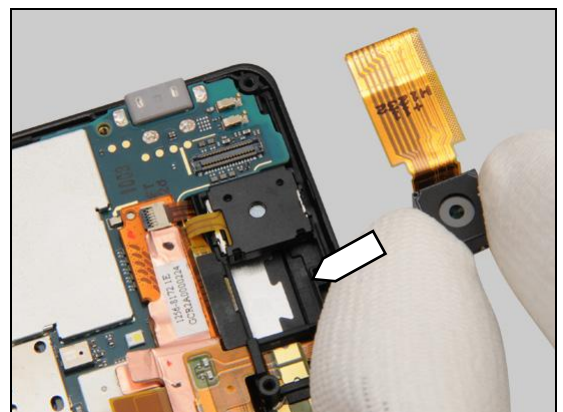
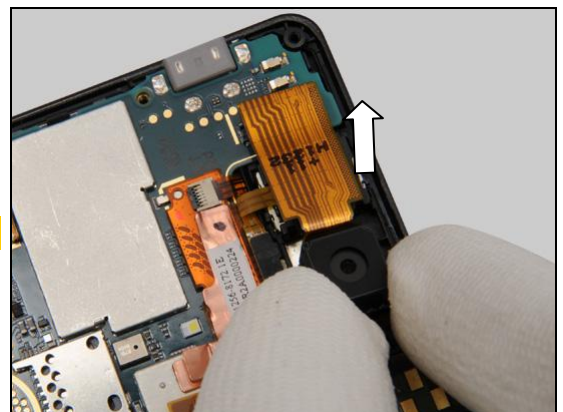
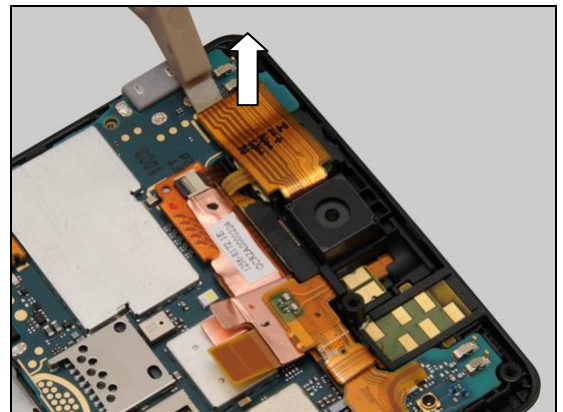
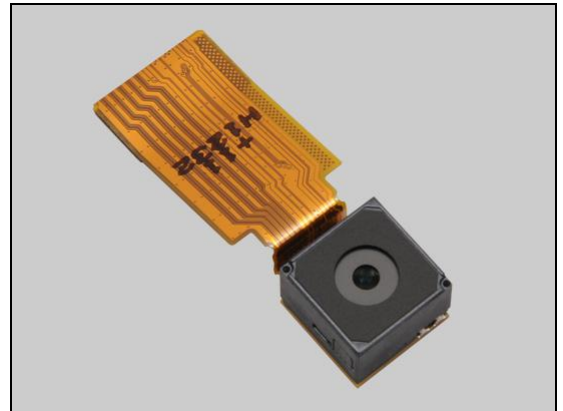
Disconnect the BtB connector of the Camera.

Remove the Camera.

Be careful! Do not touch the camera lens!

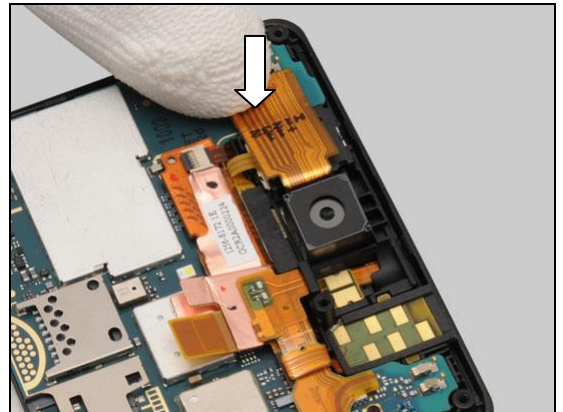
INSTALLATION

Place a new Camera in the socket.



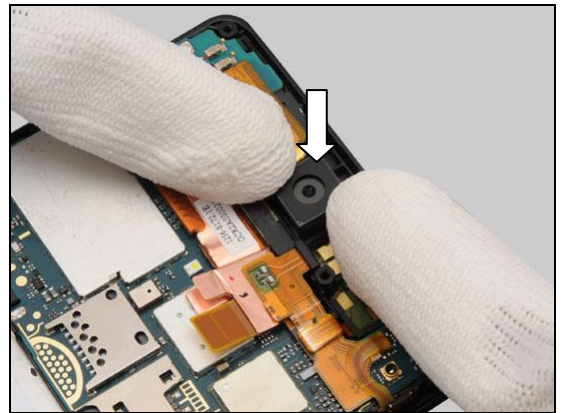
Replacement: Camera

Snap the BtB connector.



Press to secure its position.

Be careful! Do not touch the camera lens!



Replacement

4.18 RCV Flex FPC

Follow the 3.1 – 3.3 Disassembly instructions!

Follow the 4.17 Removal instructions!

Carry out the Removal as described below.

Prepare a new RCV Flex FPC.

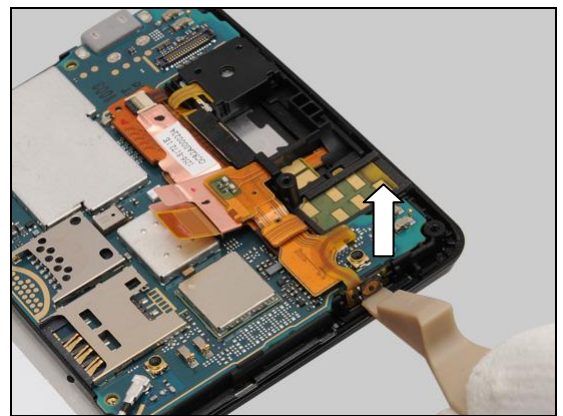
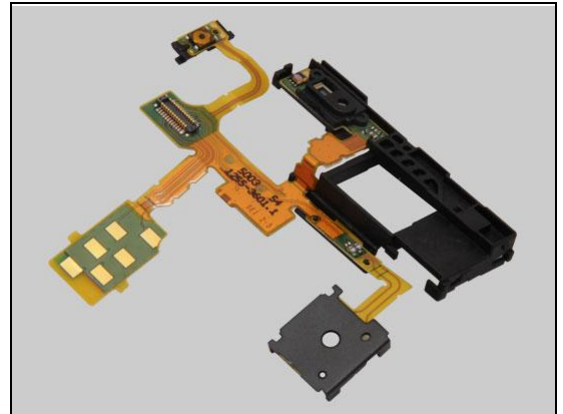
Carry out the Installation as described below.

Follow the 4.17 Installation instructions!

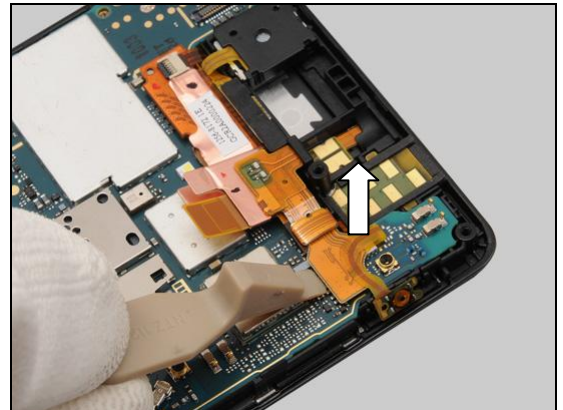
Follow the 5.5 – 5.7 Reassembly instructions!

REMOVAL

Insert a Front Opening Tool as shown and gently pull upwards to release the key on/off switch by using a Front Opening Tool.

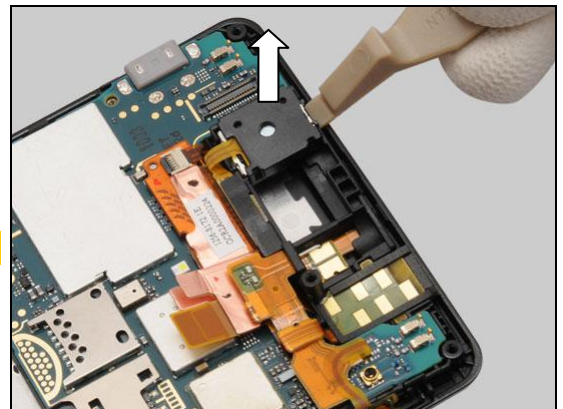


Disconnect the BtB connector.



Insert a Front Opening Tool as shown and gently pull upwards to release the RCV Flex FPC Assy from this side.

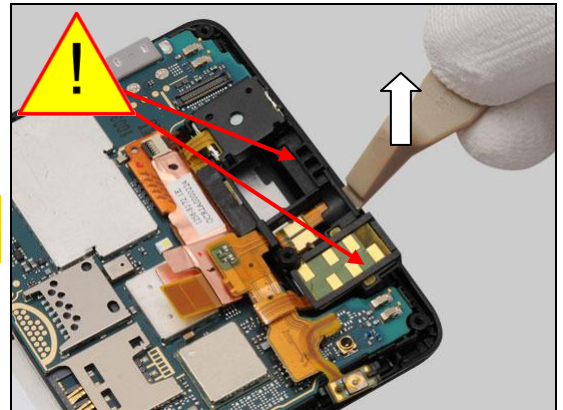
Be careful! Do not damage the Cover Front Assy!



Replacement: RCV Flex FPC

Do the same on the other side as shown in picture.

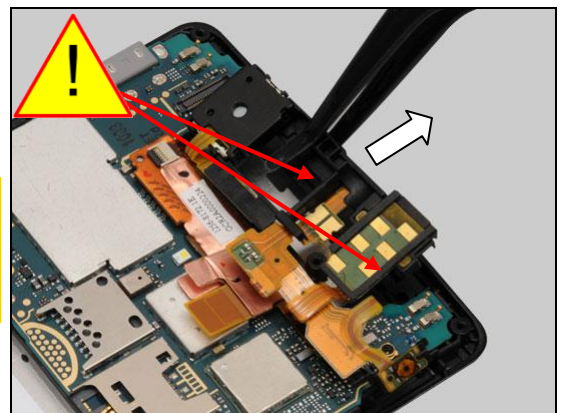
Be careful! Do not damage the earspeaker mesh and the proximity sensor window of the Cover Front Assy!



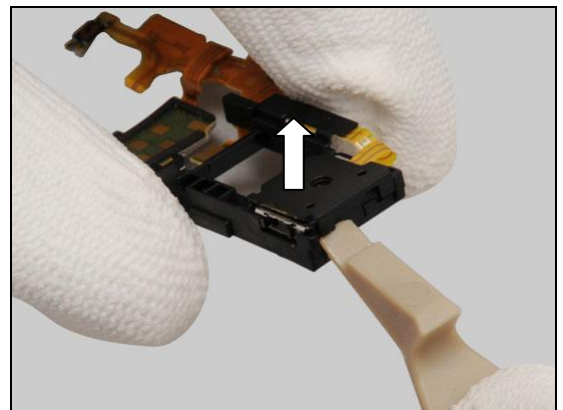
Remove the RCV Flex FPC Assy by using a Flex Film Assembly Tool.

Scrap the RCV Flex Assy! Only the Ear Speaker can be reused!

Be careful! Do not damage the earspeaker mesh and the proximity sensor window of the Cover Front Assy!

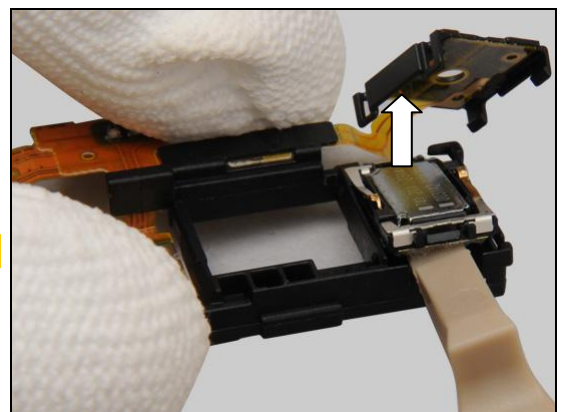


Unsnap the hook of the RCV Flex FPC Assy.



Insert a Front Opening Tool as shown and gently pull upwards to release the Ear Speaker.

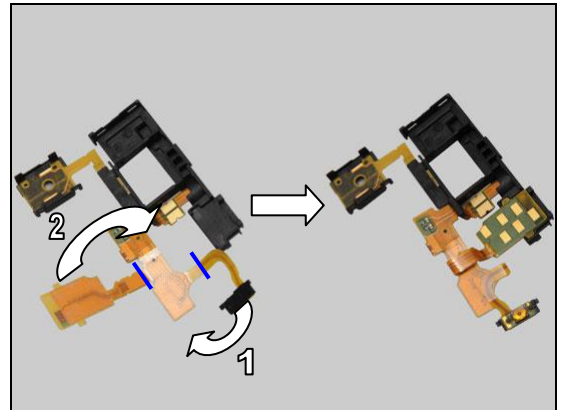
Scrap the RCV Flex FPC! Not to be reused!



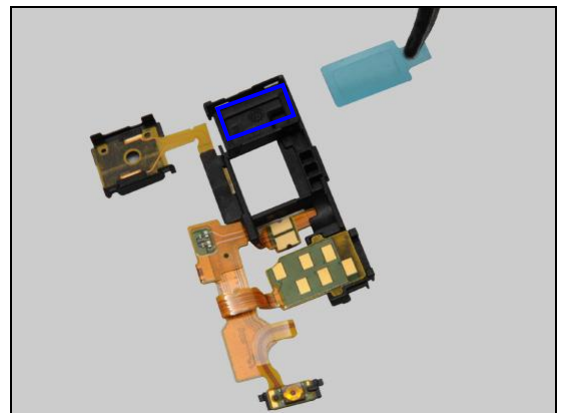
Replacement: RCV Flex FPC

INSTALLATION

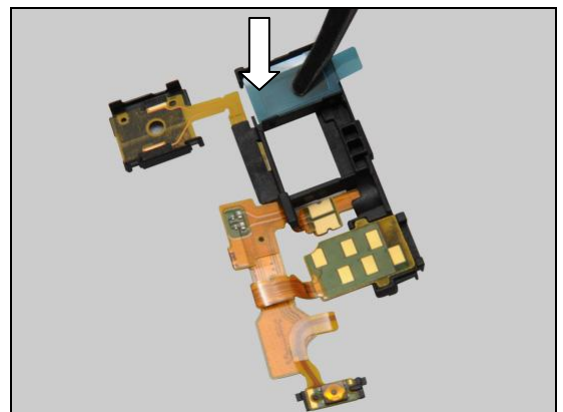
Prepare a new RCV Flex FPC and make sure the RCV Flex FPC to be pre-bent as shown in picture.



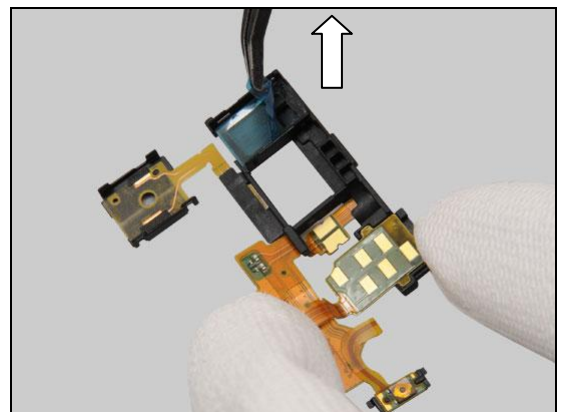
Attach a new Adhesive Earspeaker in the cavity.



Press to secure its position and attachment.

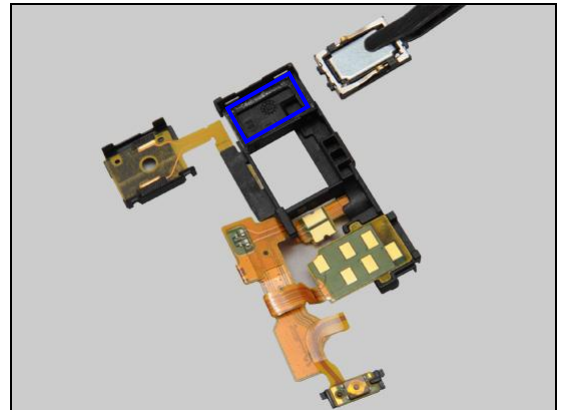


Peel off the protective film.



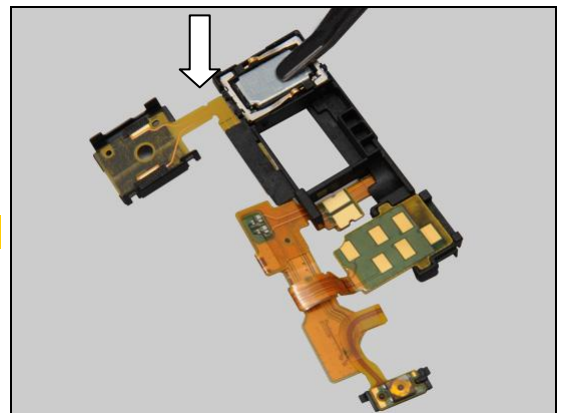
Replacement: RCV Flex FPC

Place the Ear Speaker in the cavity.

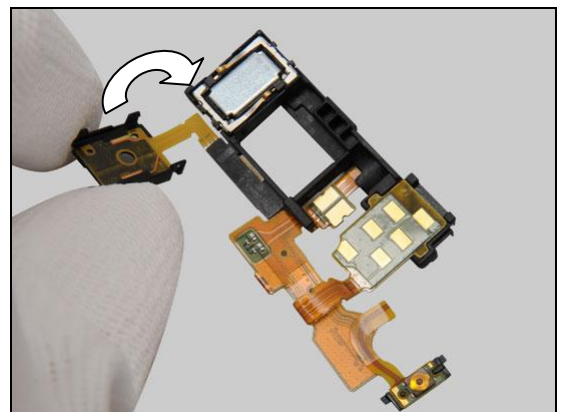


Press to secure its attachment and position.

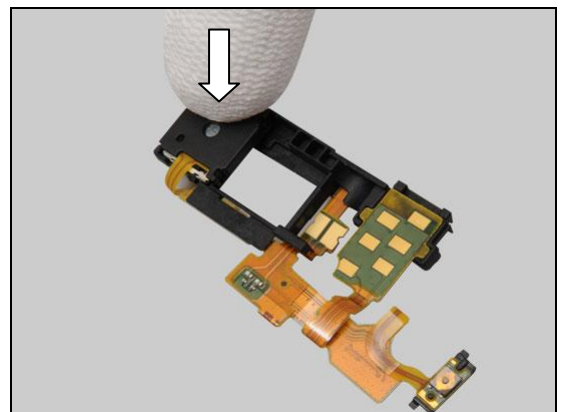
Be careful! Do not touch the contact pins!



Turn it over.

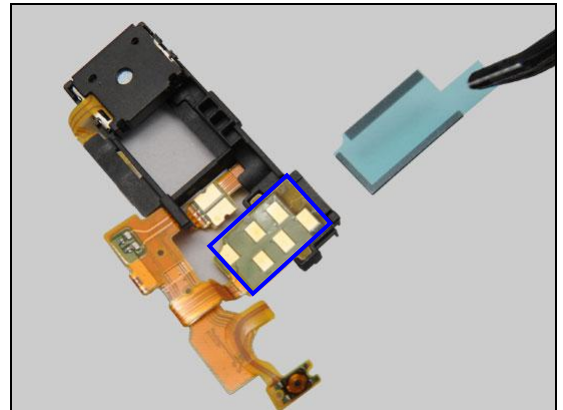


Press to snap the hook of the RCV Flex FPC Assy.

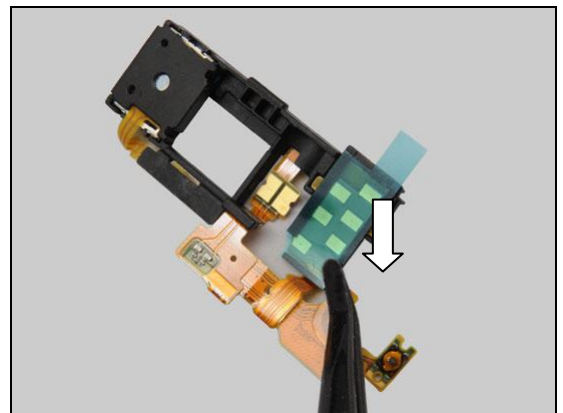


Replacement: RCV Flex FPC

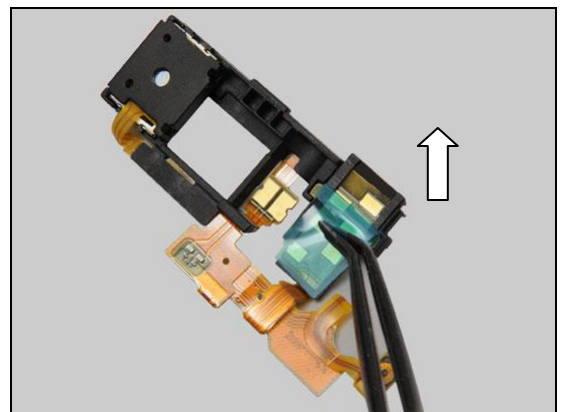
Attach a new Cushion Audio Jack 2 on its proper position as shown.



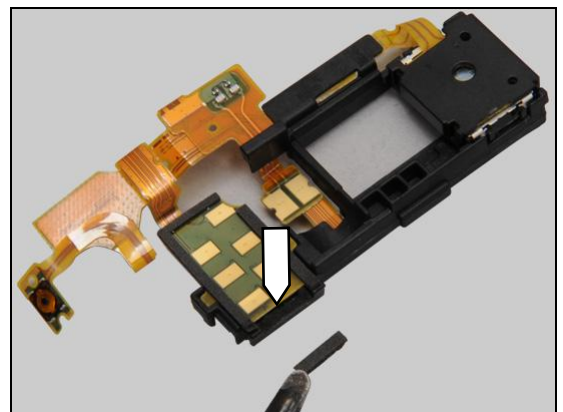
Press along to secure its attachment and position.



Peel off the protective film.

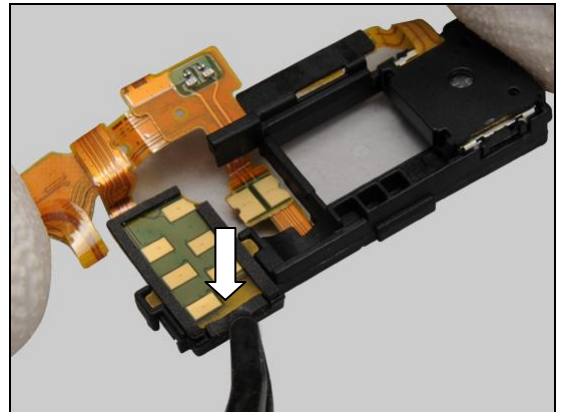


Attach a new Cushion Audio Jack on its proper position as shown.

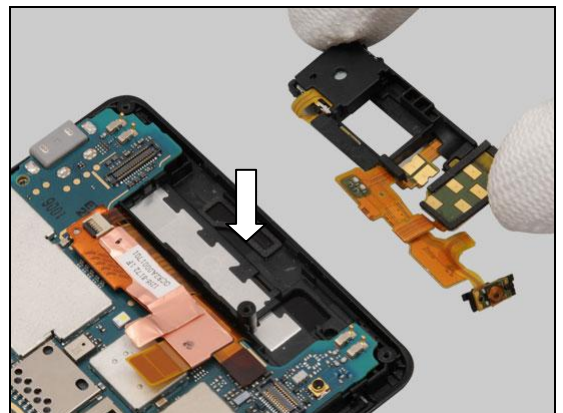


Replacement: RCV Flex FPC

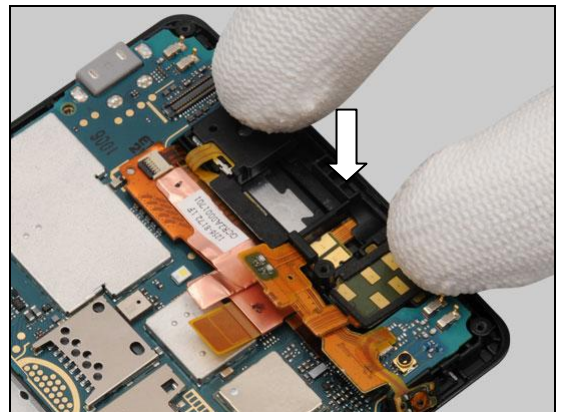
Press to secure its attachment and position.



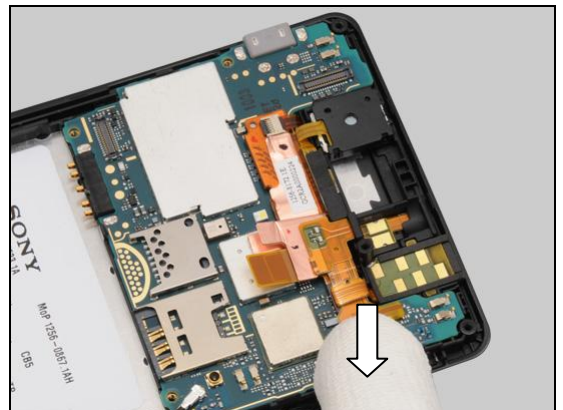
Place the new RCV Flex FPC Assy into the cavity.



Press to secure its position.

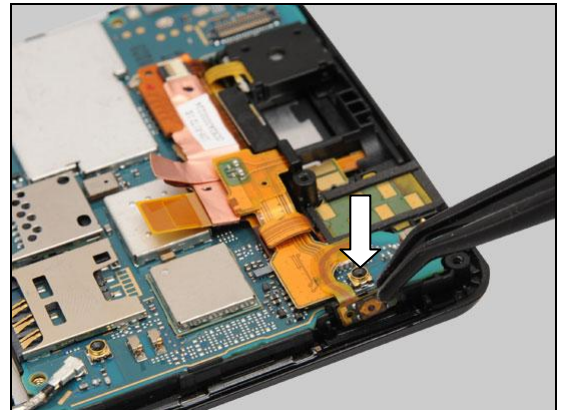


Snap the BtB connector.

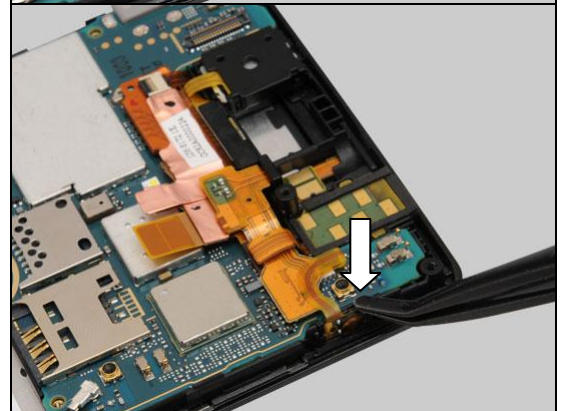


Replacement: RCV Flex FPC

Gently insert the key on/off switch into its cavity.



Press to secure its position.



Replacement

4.19 Ear Speaker & Adhesive Earspeaker

Follow the 3.1 – 3.3 Disassembly instructions!

Follow the 4.17 Removal instructions!

Carry out the Removal as described below.

Prepare a new Ear Speaker and a new Adhesive Earspeaker.

Carry out the Installation as described below.

Follow the 4.17 Installation instructions!

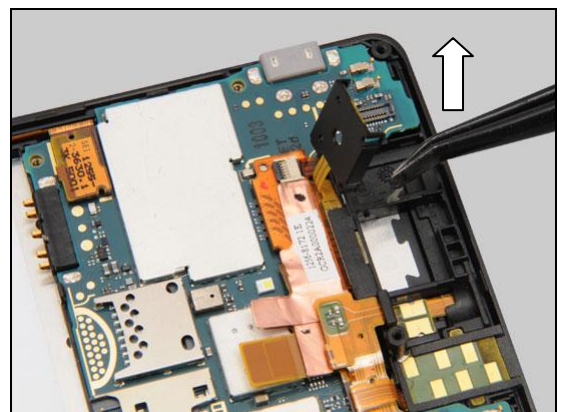
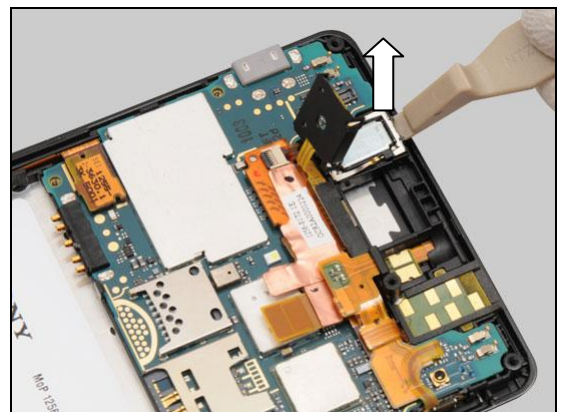
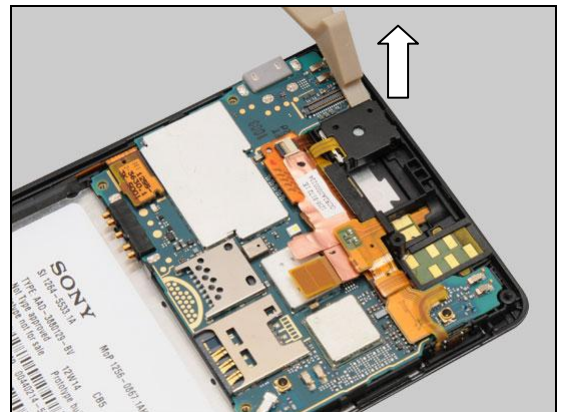
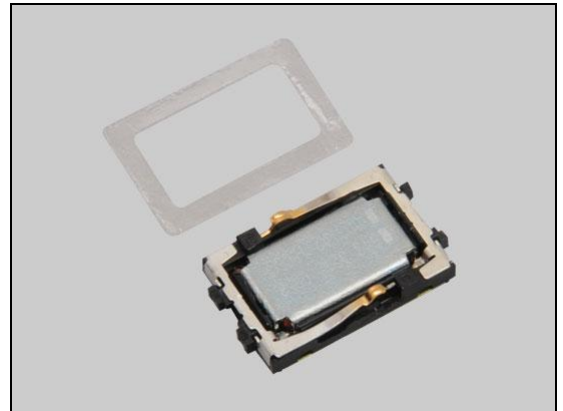
Follow the 5.5 – 5.7 Reassembly instructions!

REMOVAL

Insert a Front Opening Tool as shown and gently pull upwards to release the hook.

Detach to remove the Ear Speaker.

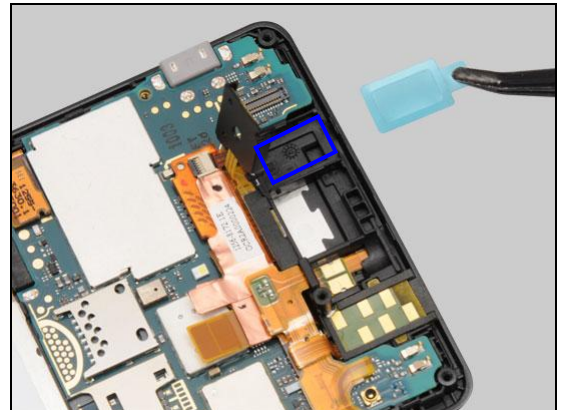
Detach to remove the Adhesive Earspeaker.



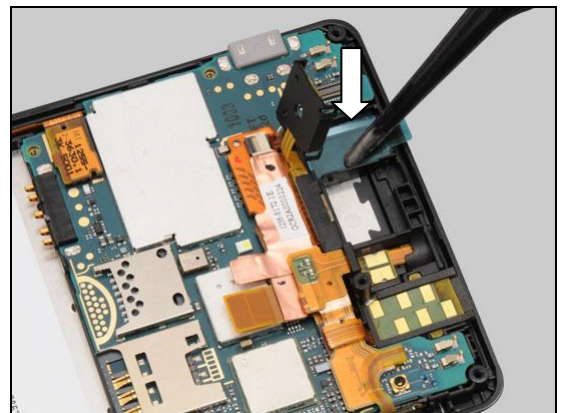
Replacement: Ear Speaker & Adhesive Earspeaker

INSTALLATION

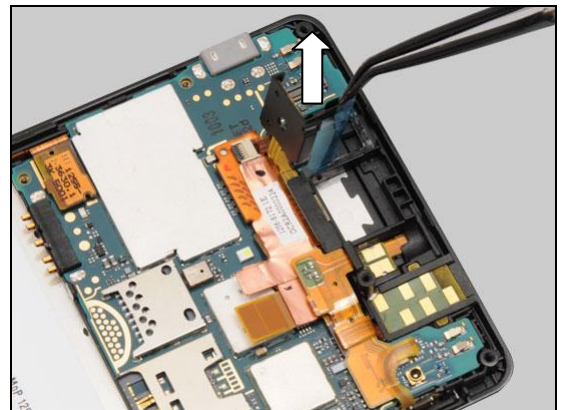
Attach a new Adhesive Earspeaker in the cavity.



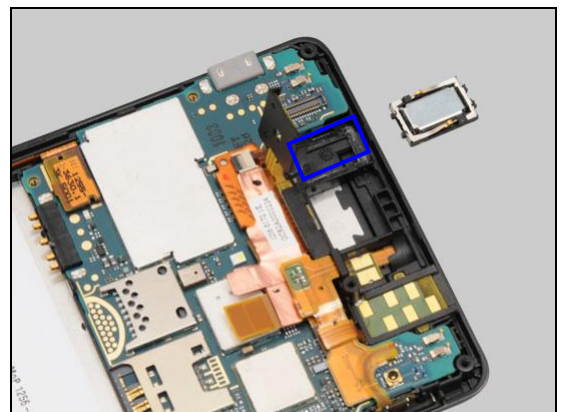
Press to secure its position and attachment.



Peel off the protective film.



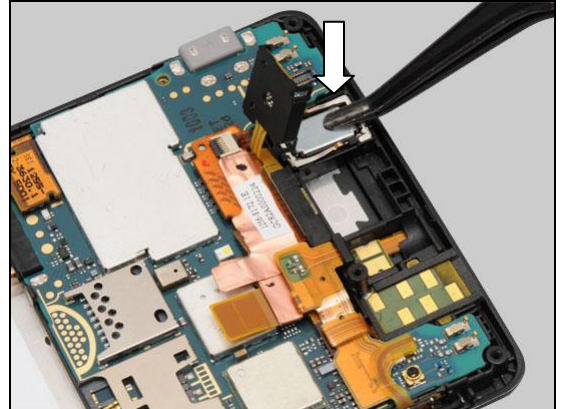
Place a new Ear Speaker in the cavity.



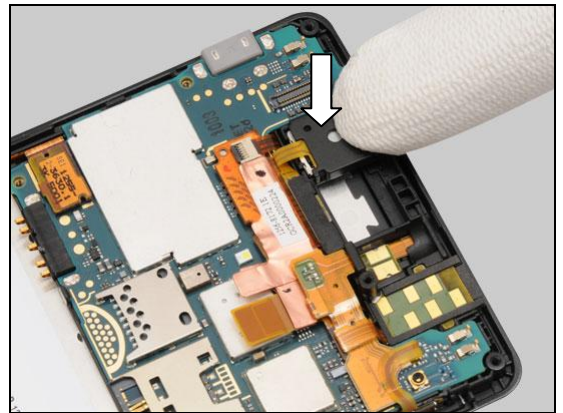
Replacement: Earspeaker & Adhesive Earspeaker

Press to secure its attachment and position.

Be careful! Do not touch the contact pins!



Press to snap the hook of the RCV Flex FPC Assy.



Replacement

4.20 Cushion Audio Jack

Follow the 3.1 – 3.3 Disassembly instructions!

Carry out the Removal as described below.

Prepare a new Cushion Audio Jack.

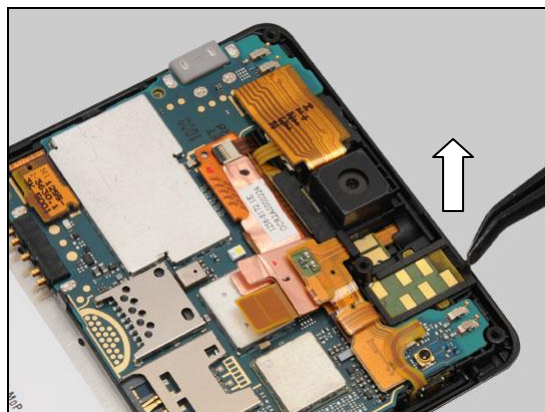
Carry out the Installation as described below.

Follow the 5.5 – 5.7 Reassembly instructions!

REMOVAL

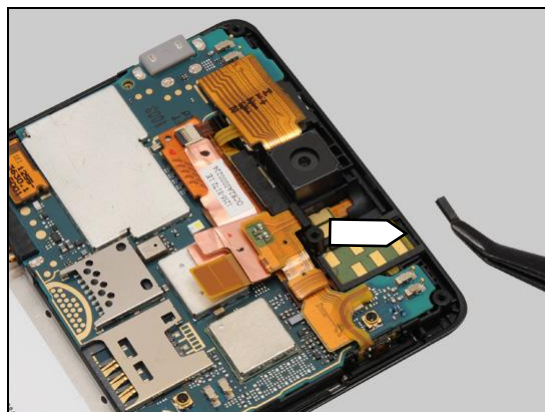
Detach to remove the Cushion Audio Jack by using a Flex Film Assembly Tool.

Scrap! Not to be reused!

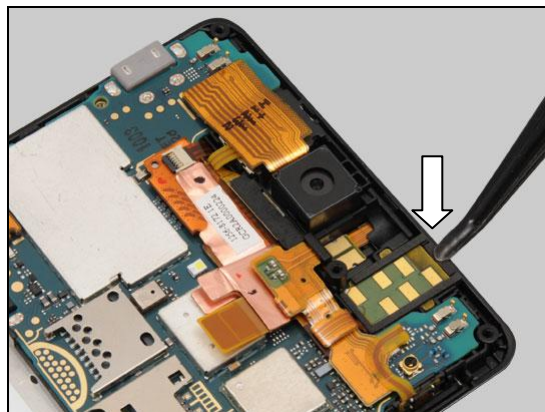


INSTALLATION

Place a new Cushion Audio Jack on the proper position as indicated by the pointer.



Press to secure its attachment and position.



Replacement

4.21 Cushion Audio Jack 2

Follow the 3.1 – 3.3 Disassembly instructions!

Carry out the Removal as described below.

Prepare a new Cushion Audio Jack 2.

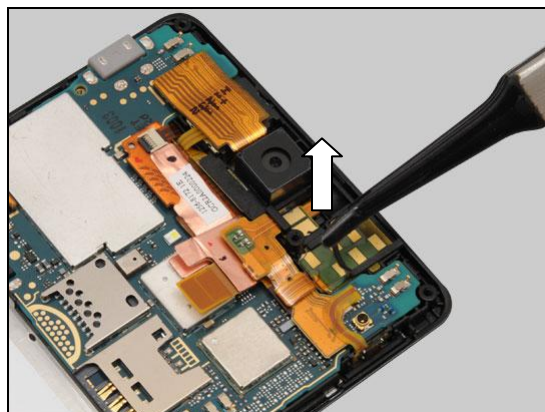
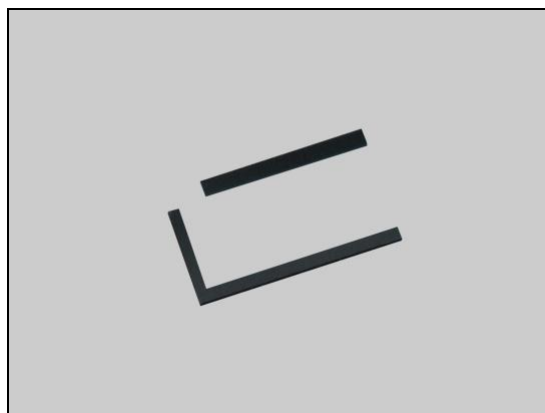
Carry out the Installation as described below.

Follow the 5.5 – 5.7 Reassembly instructions!

REMOVAL

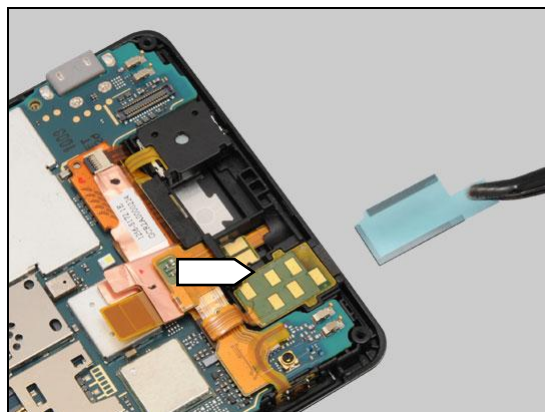
Detach to remove the Cushion Audio Jack 2 by using a Flex Film Assembly Tool.

Scrap! Not to be reused!

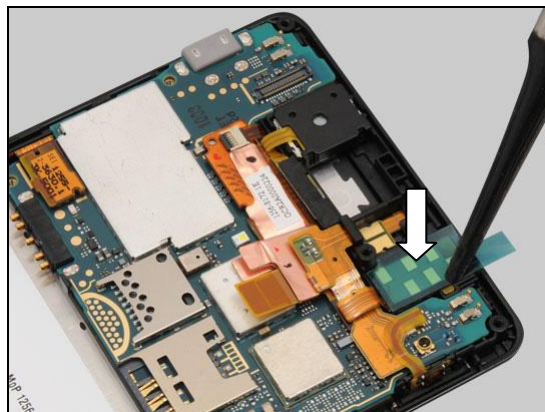


INSTALLATION

Place a new Cushion Audio Jack 2 on the proper position as indicated by the pointer.

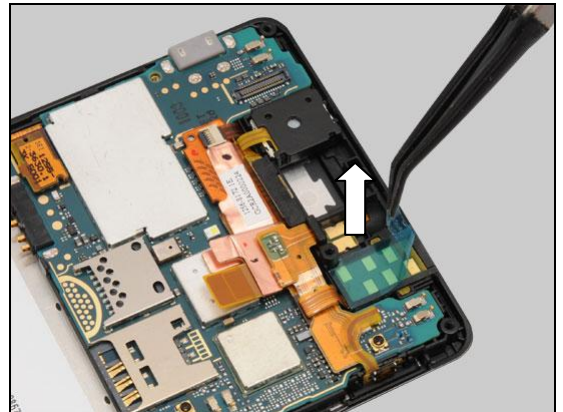


Press to secure its attachment and position.



Replacement: Cushion Audio Jack 2

Peel off the protective film.



Replacement

4.22 RF Cable

Follow the 3.1 – 3.3 Disassembly instructions!

Carry out the Removal as described below.

Prepare a new RF Cable.

Carry out the Installation as described below.

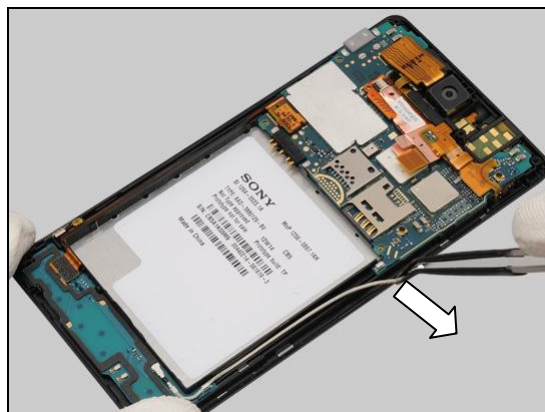
Follow the 5.5 – 5.7 Reassembly instructions!

REMOVAL

Disconnect this end of the RF Cable.



Gently pull outwards to release the RF Cable from the hook of the Main PBA.

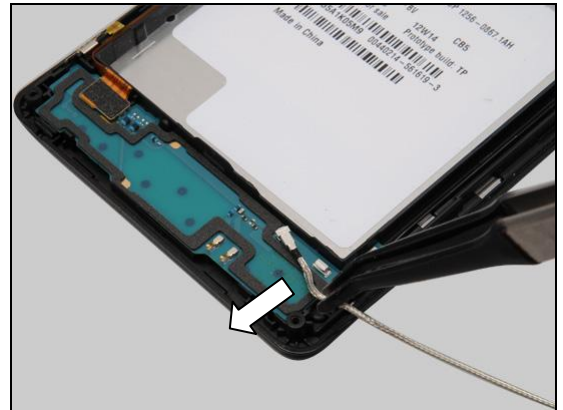


Do the same to release it from the hook of the Sub Board Assy.

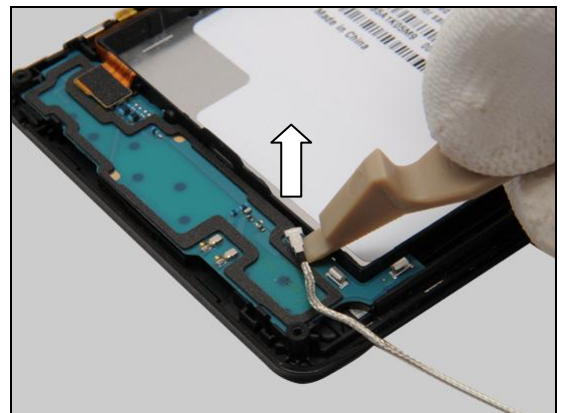


Replacement: RF Cable

Do the same to release it from the second hook.



Disconnect this end of the RF Cable and remove it.

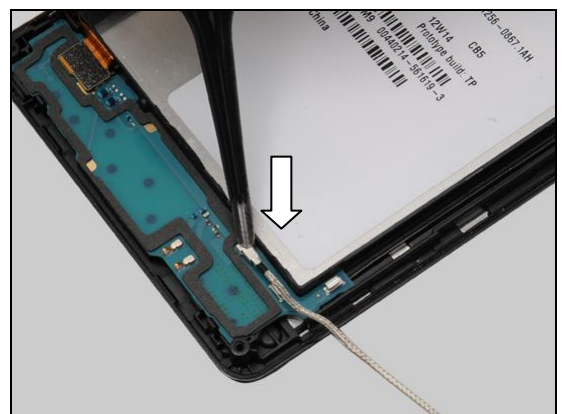


INSTALLATION

Prepare a new RF Cable and the front unit.



Snap this end of the RF Cable.



Replacement: RF Cable

Push it into the hook of the Sub Board Assy.



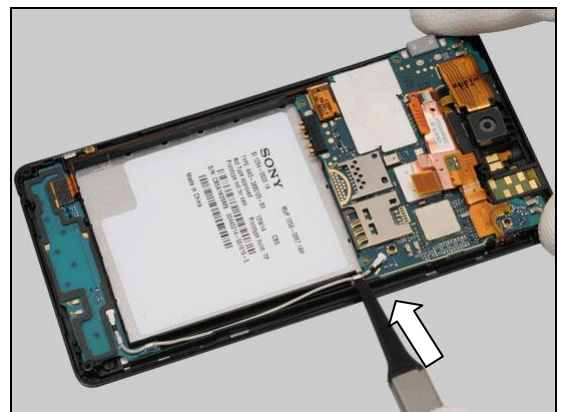
Do the same to the second hook.



Connect this end of the RF Cable.

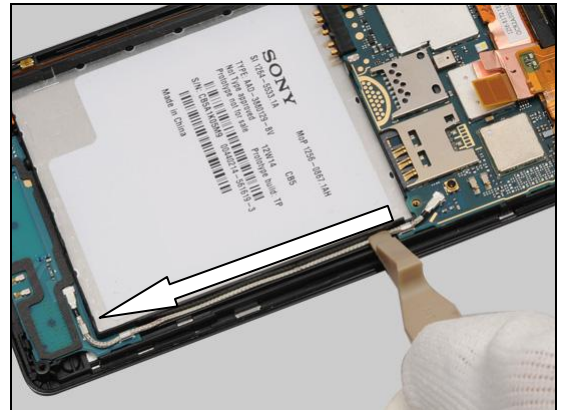


Push it into the hook of Main PBA.



Replacement: RF Cable

Press along to insert the RF Cable into the socket by using a Front Opening Tool.



Push the RF Cable as shown to secure its position.



Replacement

4.23 Cushion Key Flex

Follow the 3.1 – 3.3 Disassembly instructions!

Carry out the Removal as described below.

Prepare a new Cushion Key Flex.

Carry out the Installation as described below.

Follow the 5.5 – 5.7 Reassembly instructions!

REMOVAL

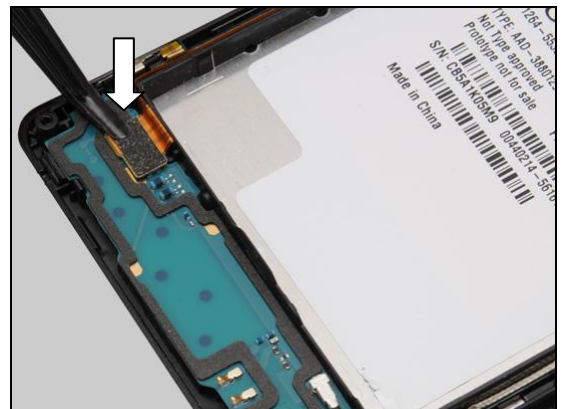
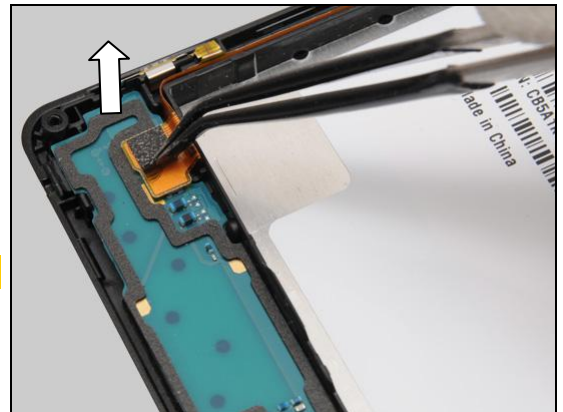
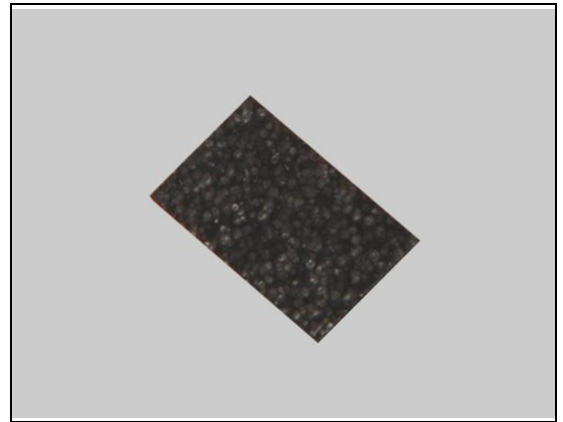
Detach to remove the Cushion Key Flex.

Scrap! Not to be reused!

INSTALLATION

Attach a new Cushion Key Flex on its proper position as shown.

Press to secure its attachment and position.



Replacement

4.24 Key Flex FPC

Follow the 3.1 – 3.4 Disassembly instructions!

Prepare a new Key Flex FPC.

Follow the 4.23 Installation instructions!

Follow the 5.4 – 5.7 Reassembly instructions!



Replacement

4.25 Sub Board Assy

Follow the 3.1 – 3.4 Disassembly instructions!

Follow the 4.22 Remove instructions!

Carry out the Removal as described below.

Prepare a new Sub Board Assy.

Carry out the Installation as described below.

Follow the 4.22 Installation instructions!

Follow the 5.4 – 5.7 Reassembly instructions!

REMOVAL

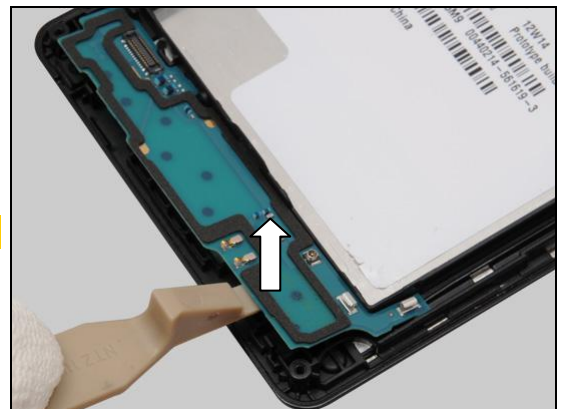
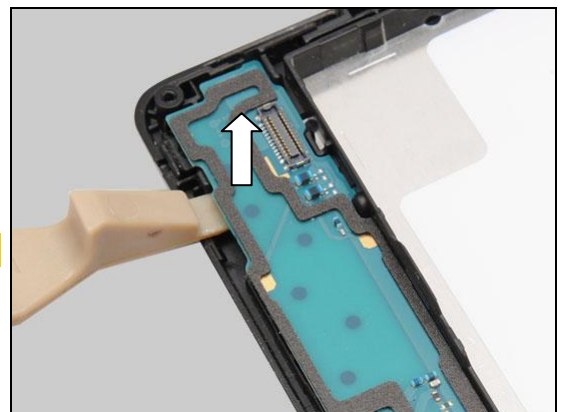
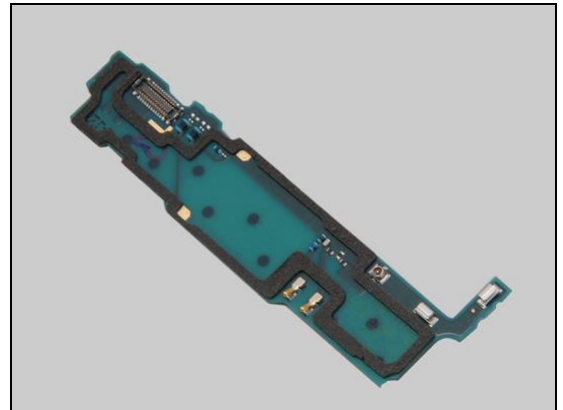
There are two hooks securing the Sub Board Assy.

Insert a Front Opening Tool as shown and gently pull upwards to release the hook of this side.

Be careful! Do not damage the Sub Board Assy!

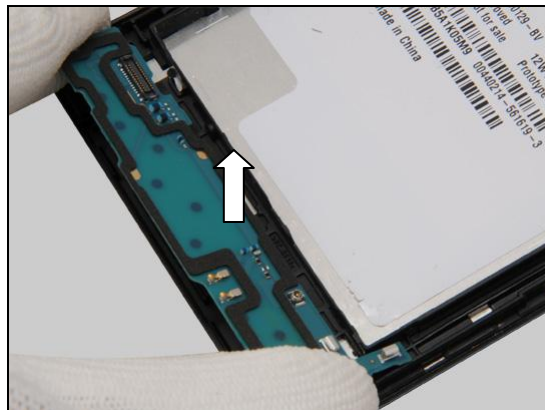
Do the same on the other side.

Be careful! Do not damage the Sub Board Assy!



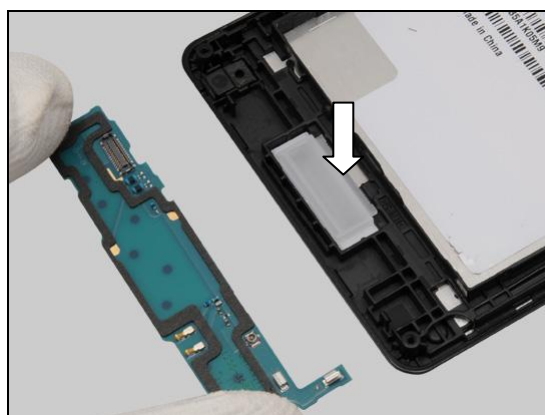
Replacement: Sub Board Assy

Remove it.



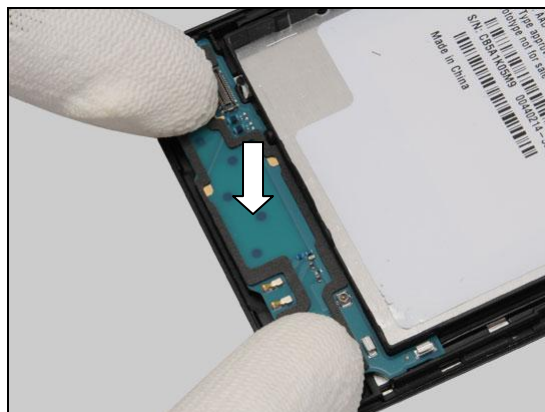
INSTALLATION

Place a new Sub Board Assy in the cavity.



Press to snap the hooks.

Be careful! Do not touch the contact pins!



Replacement

4.26 Cushion PBA Main

Follow the 3.1 – 3.7 Disassembly instructions!

Carry out the Removal as described below.

Prepare a new Cushion PBA Main.

Carry out the Installation as described below.

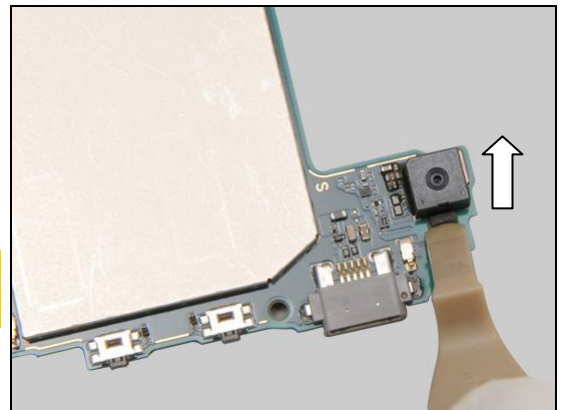
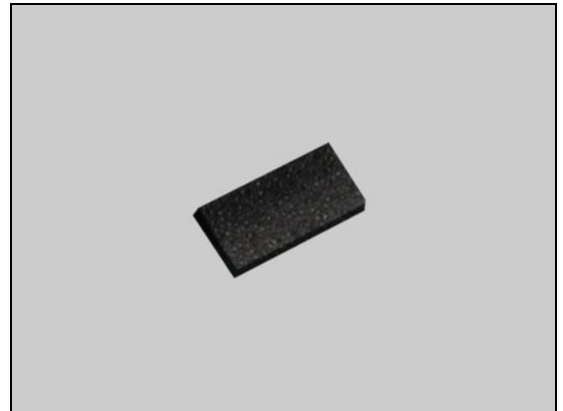
Follow the 5.1 – 5.7 Reassembly instructions!

REMOVAL

Detach to remove the Cushion PBA Main by using a Front Opening Tool.

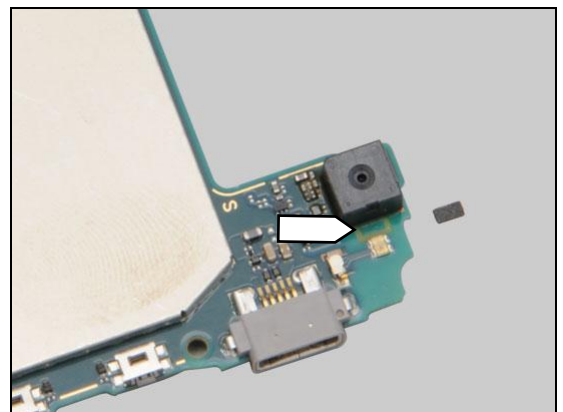
Be careful! Do not damage the components!

Scrap! Not to be reused!

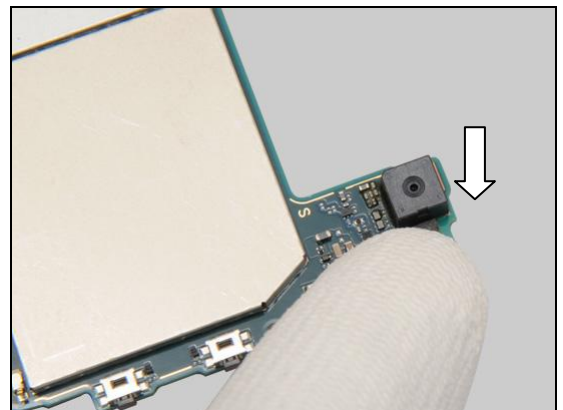


INSTALLATION

Place a new Cushion PBA Main on the PBA as indicated by the pointer and the guiding line.



Press to secure its attachment and position.



Replacement

4.27 Sheet PBA Main

Follow the 3.1 – 3.7 Disassembly instructions!

Carry out the Removal as described below.

Prepare a new Sheet PBA Main.

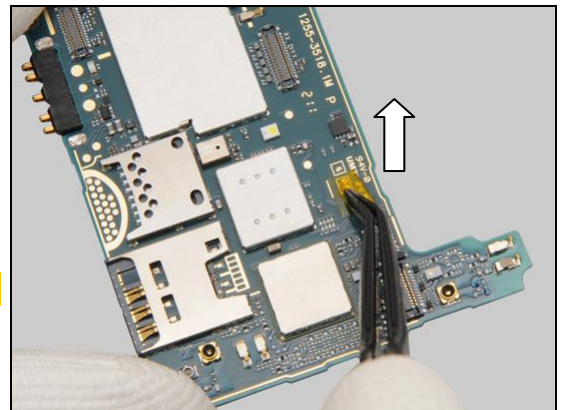
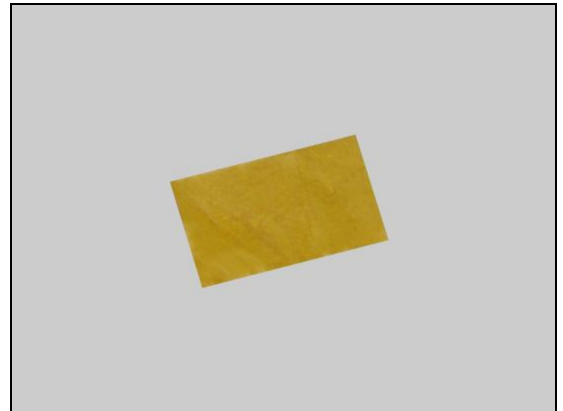
Carry out the Installation as described below.

Follow the 5.1 – 5.7 Reassembly instructions!

REMOVAL

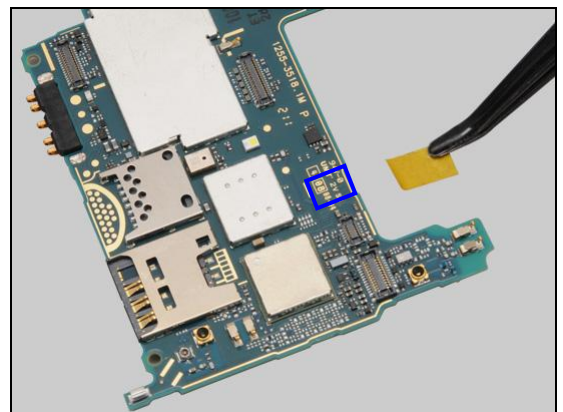
Peel off the Sheet PBA Main by using Flex Film Assembly Tool.

Scrap! Not to be reused!

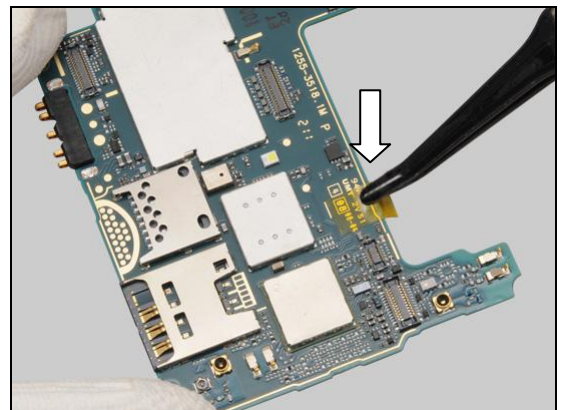


INSTALLATION

Place a new Sheet PBA Main on the PBA as indicated by the pointer and the guiding line.

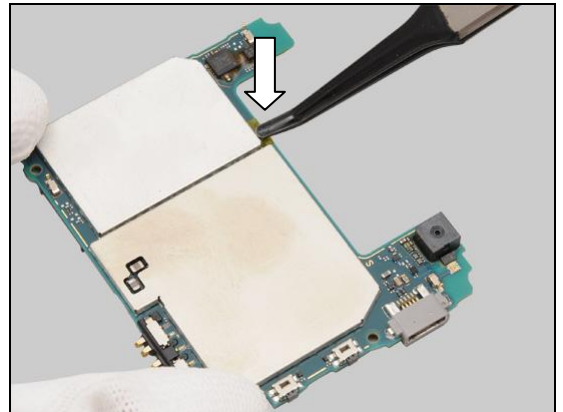


Press along to secure its attachment and position.



Replacement: Sub Board Assy

Do the same on the opposite side.



Replacement

4.28 Cover Front Assy

Follow the 3.1 – 3.7 Disassembly instructions!

Follow the 4.22 and 4.25 Removal instructions!

Prepare a new Cover Front Assy.

Follow the 4.25 and 4.22 Installation instructions!

Follow the 5.1 – 5.7 Reassembly instructions!

Proxy sensor calibration has to be performed for all replaced units; 1262-6643 Trouble Shooting Application – mechanical.



Replacement

4.29 Board Swap - Replacement

Follow the 3.1 – 3.7 Disassembly instructions!

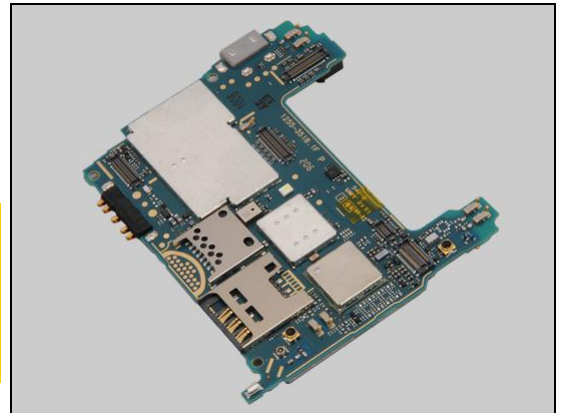
Replace the Swap Board.

Reuse the Camera.

Follow the 5.1 – 5.7 Reassembly instructions!

Startup the unit to initialize settings, and wait 4 minutes before performs Customize Phone in Emma.

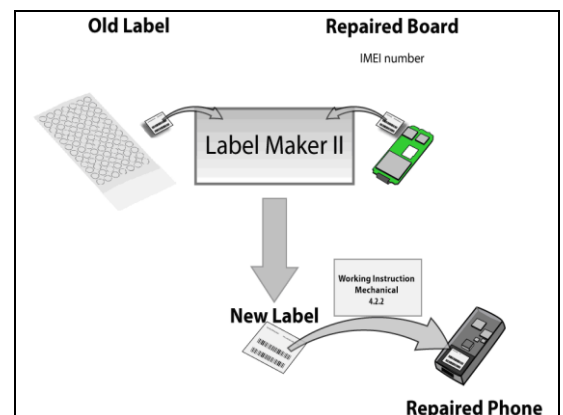
Proxy sensor calibration has to be performed for all replaced units; 1262-6643 Trouble Shooting Application – mechanical.



4.30 Board Swap – Change Label

CHANGE LABEL

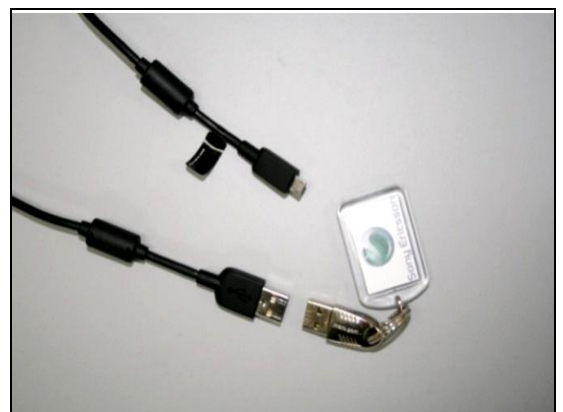
Follow the instructions in the Generic Repair Manual – Build swap for change of label.



4.31 Board Swap – Customize of Software

CUSTOMIZE OF SOFTWARE

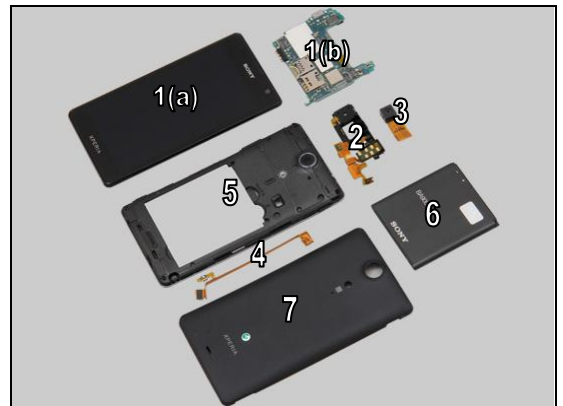
Follow the instructions in the Generic Repair Manual – Build swap for customization of the software.



5 Reassembly

The reassembly is done in the following order:

1. Cover Front Assy (a) & Main PBA (b)
2. RCV Flex FPC Assy
3. Camera
4. Key Flex FPC
5. Frame Rear Assy
6. Battery
7. Cover Battery Assy

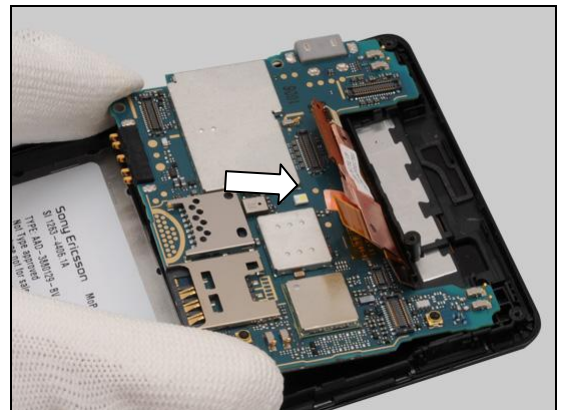


5.1 Cover Front Assy & Main PBA

Prepare the Cover Front Assy and the Main PBA.



Place the Main PBA on the Cover Front Assembly.



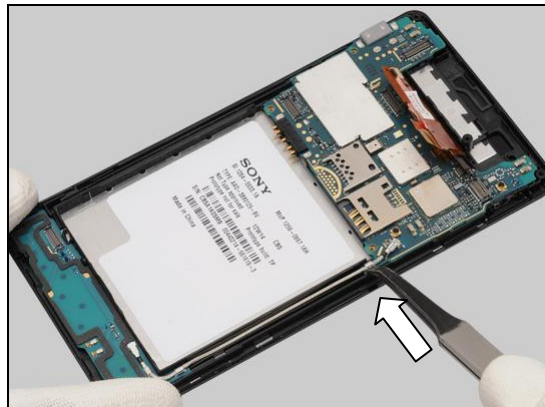
Press to snap the hooks.

Be careful! Do not touch the pins on the Main PBA!



Reassembly

Gently push against the RF Cable to snap it into the hook of the Main PBA.



Connect this end of the RF Cable.



Press along to insert the RF Cable into the socket.

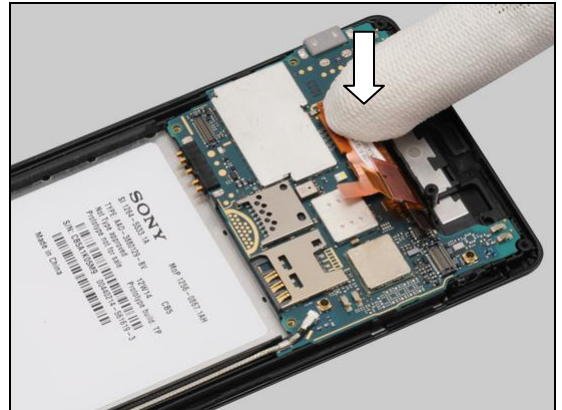


Push the RF Cable as shown to secure its position.



Reassembly

Snap the BtB connector with finger.



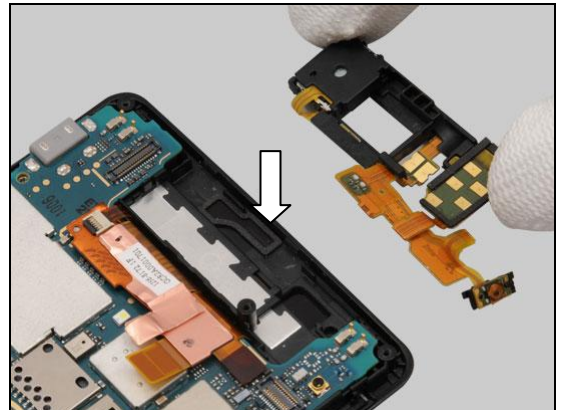
Snap the second BtB connector.



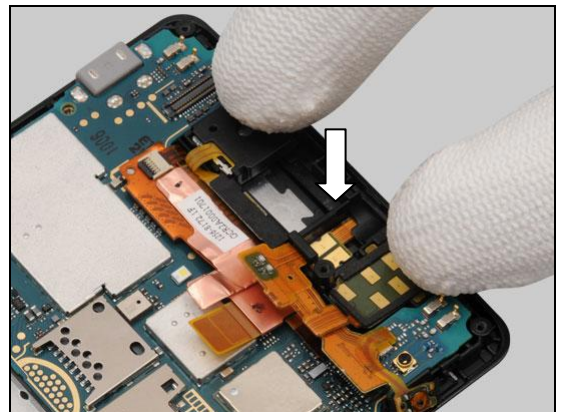
5.2 RCV Flex FPC Assy

Follow the 4.18 Removal and Installation instructions to replace a new RCV Flex FPC Assy!

Place the new RCV Flex FPC Assy in the cavity as shown.

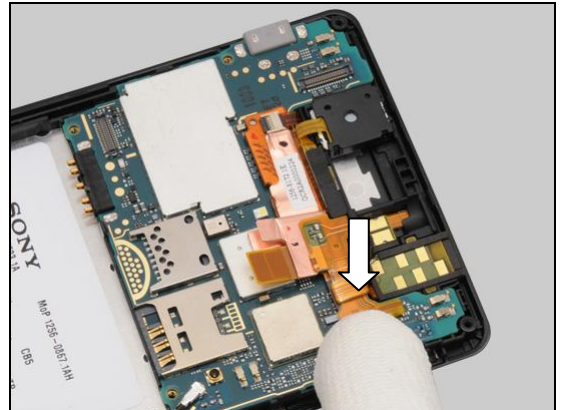


Press to snap the hooks.

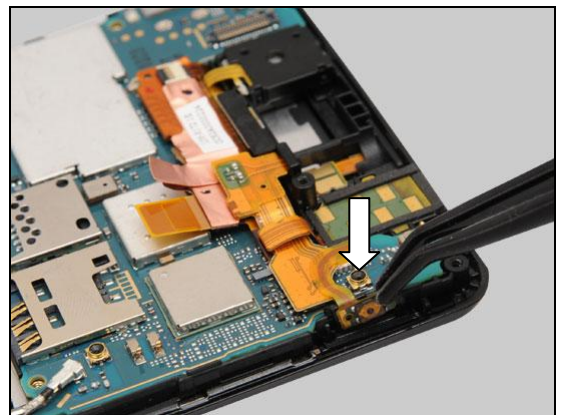


Reassembly

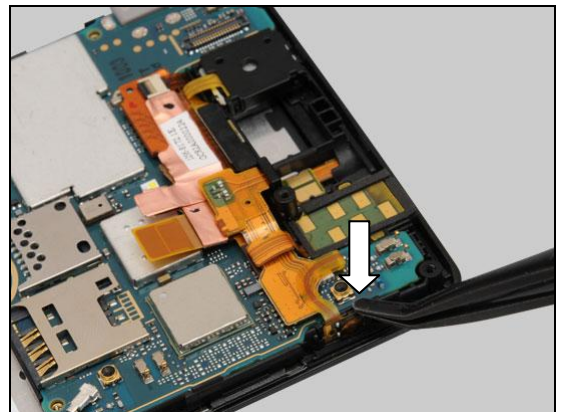
Snap the BtB connector.



Gently insert the key on/off switch into its cavity.

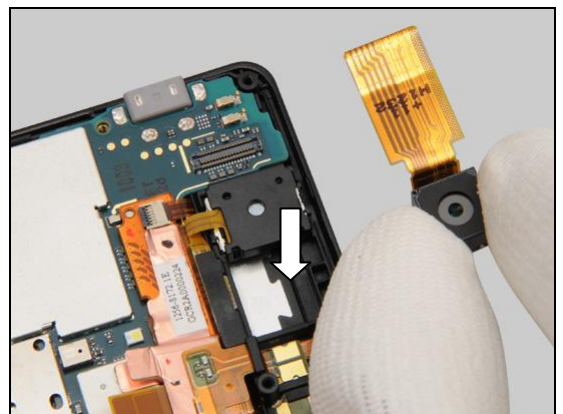


Press to secure its position.



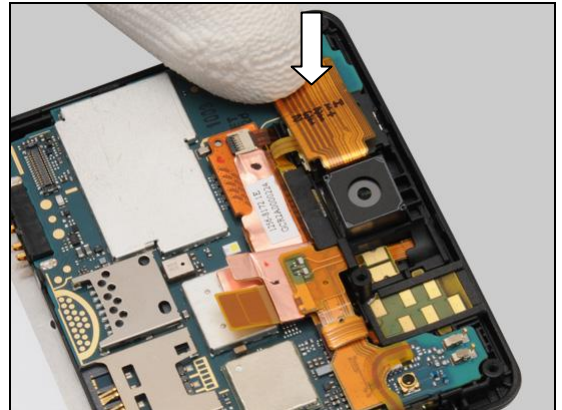
5.3 Camera

Place the Camera into the socket.



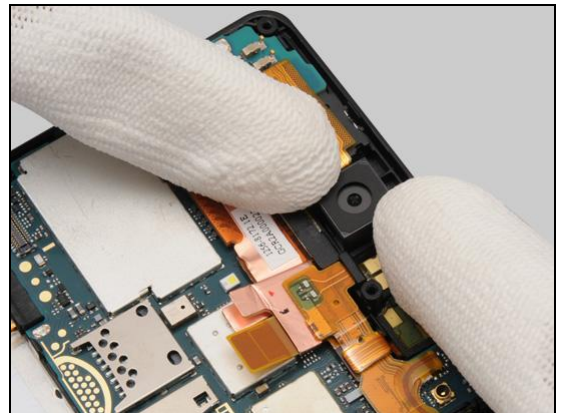
Reassembly

Snap the BtB connector.



Press to secure its position.

Be careful! Do not touch the camera lens!

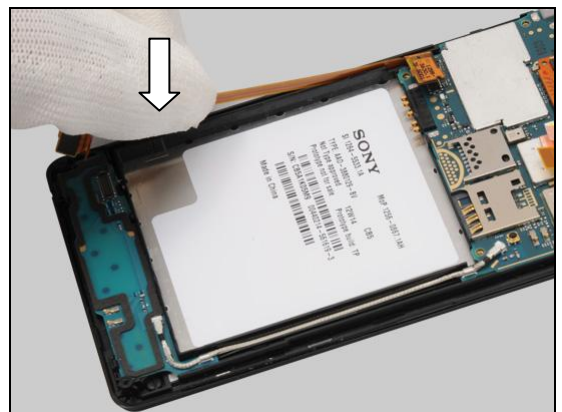


5.4 Key Flex FPC

Prepare the Key Flex FPC.

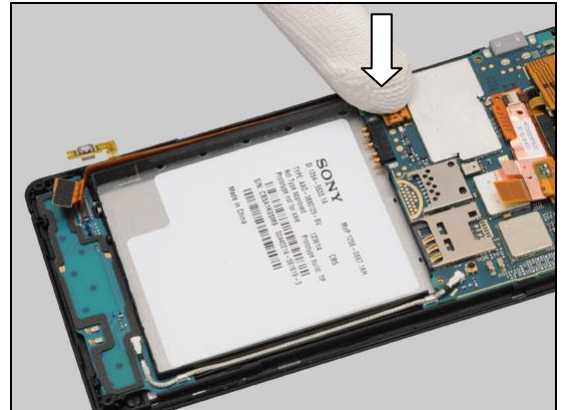


Securely place it into the socket as shown.

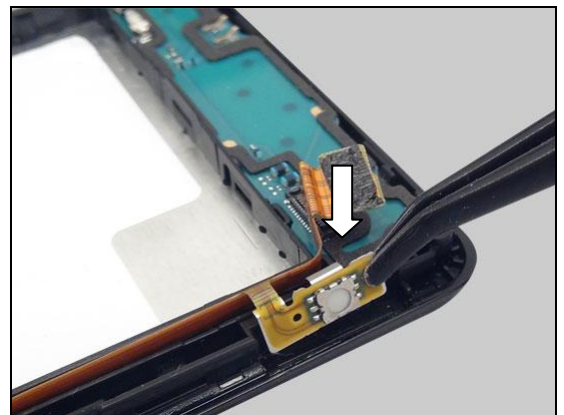


Reassembly

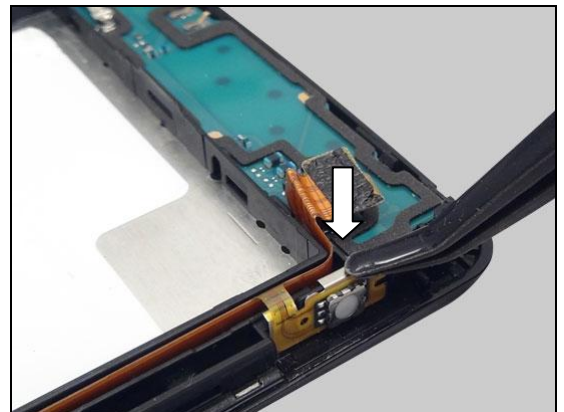
Snap the BtB connector.



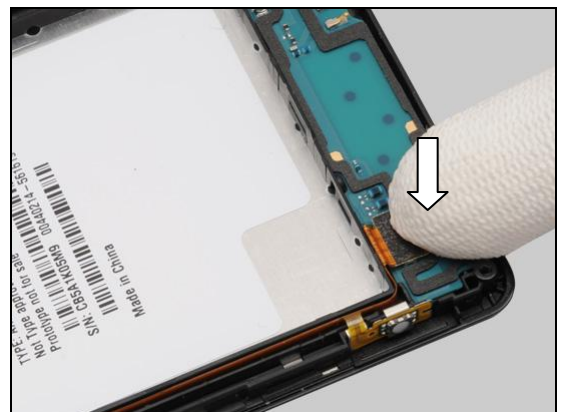
Gently insert the key camera switch into its cavity.



Press to secure its position.



Snap the BtB connector as shown.



Reassembly

5.5 Frame Rear Assy

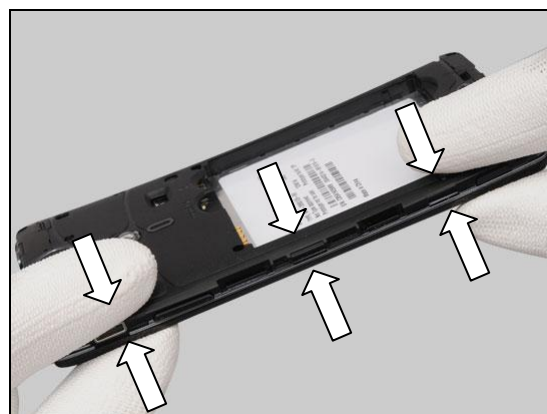
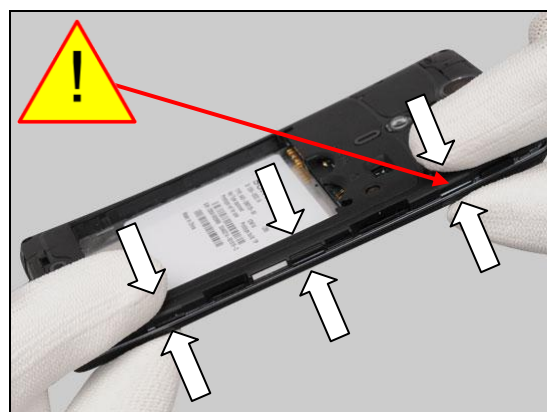
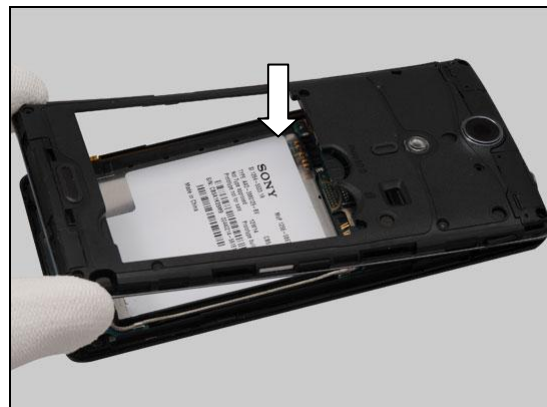
Place the Frame Rear Assy on the unit.

Press to snap the hooks.

Press to snap the hooks of this side.

Make sure the hooks securely snapped!

Do the same to the opposite side.



Reassembly

Do the same on the top side.



Do the same on the bottom side.



Apply 14 ± 1 Ncm torque when tightening the three screws with Bits (JCIS No 0).



Apply 14 ± 1 Ncm torque when tightening the screw with Bits (JCIS No 0).



Reassembly

Apply 16 ± 1 Ncm torque when tightening the four screws with Bits (T5).



5.6 Battery

Insert the Battery into its socket.



Press the bottom of the Battery to secure its position.



5.7 Cover Battery Assy

Place the Cover Battery Assy on the front unit.



Reassembly

Press to snap the hooks.



6 Revision History

Rev.	Date	Changes / Comments
1	2012-Aug-31	Initial release